



Chris Gargiulo

Designer & Teacher

MW CTR-IN

Logo & Web Site Redesign

Client page for the MW CTR-IN redesign project.

Spring 2016

In an effort to make the design process transparent and accessible to all client stakeholders, this project page contains all project-related files, including a summary of the proposal, a brief introduction to the primary goal(s), and all project assets and deliverables.

Please feel free to navigate to the primary sections of this web page by clicking on the circular color-coded buttons below or the navigation on the top and bottom of this web page. This browser-based interface is designed to be

viewed from any device, so please feel free to view this web page from any computer, tablet, or phone. I also provide links to printable pdf versions of any deliverables if possible. Thank you.

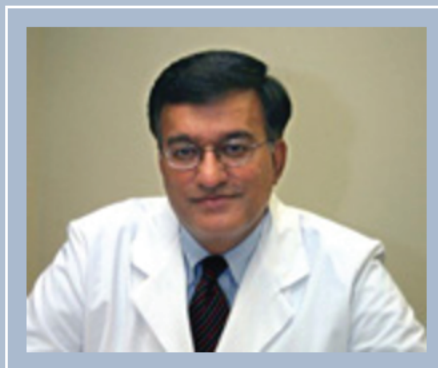
Chris Gargiulo



CLINICAL TRANSLATIONAL RESEARCH - INFRASTRUCTURE NETWORK

Home	Cores (KCA) ▾	Partners ▾	RFAs ▾	Annual Meeting ▾	Training	Grant Resources ▾	Contact
----------------------	-------------------------------	----------------------------	------------------------	----------------------------------	--------------------------	-----------------------------------	-------------------------

Home



Welcome to the MW CTR-IN!

On behalf of the University of Nevada, Las Vegas and our 12 university partners it is my pleasure to welcome you to the virtual space that is the core of our consortium.

LATEST NEWS

Mountain West IDeA Clinical and Translational Research –Infrastructure Network (CTR-IN)

We are pleased to announce that the Mountain West CTR-IN was funded effective September 15, 2013! This initial cycle will run through June 30, 2018.

Our Mission is:

- To accelerate the development of capacity and the necessary institutional culture change

Senior Leadership

[CTR-IN Senior Leadership and Staff Contact Information](#)

[Pilot Grants - Frequently Asked Questions](#)



Mountain West CTR-IN Third Annual Meeting

"Building Health Disparities in the Mountain West Region"

[CTR-IN Overview - General](#)

[Citing the CTR-IN](#)

[Mentor or Collaborator Search](#)

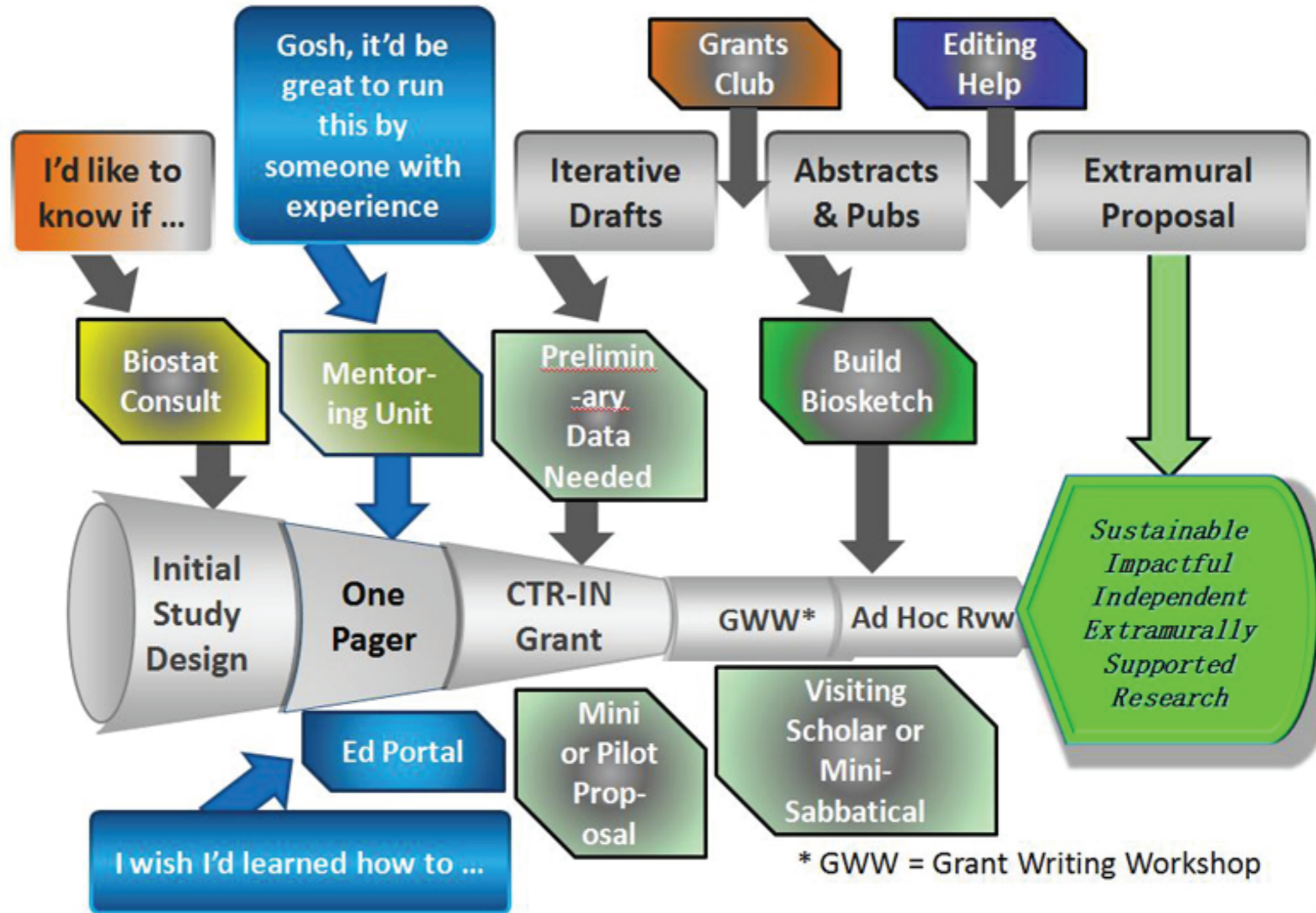


Funded by a grant from the
National Institute of General Medical Sciences
of the National Institutes of Health:
#: 5U54GM104944



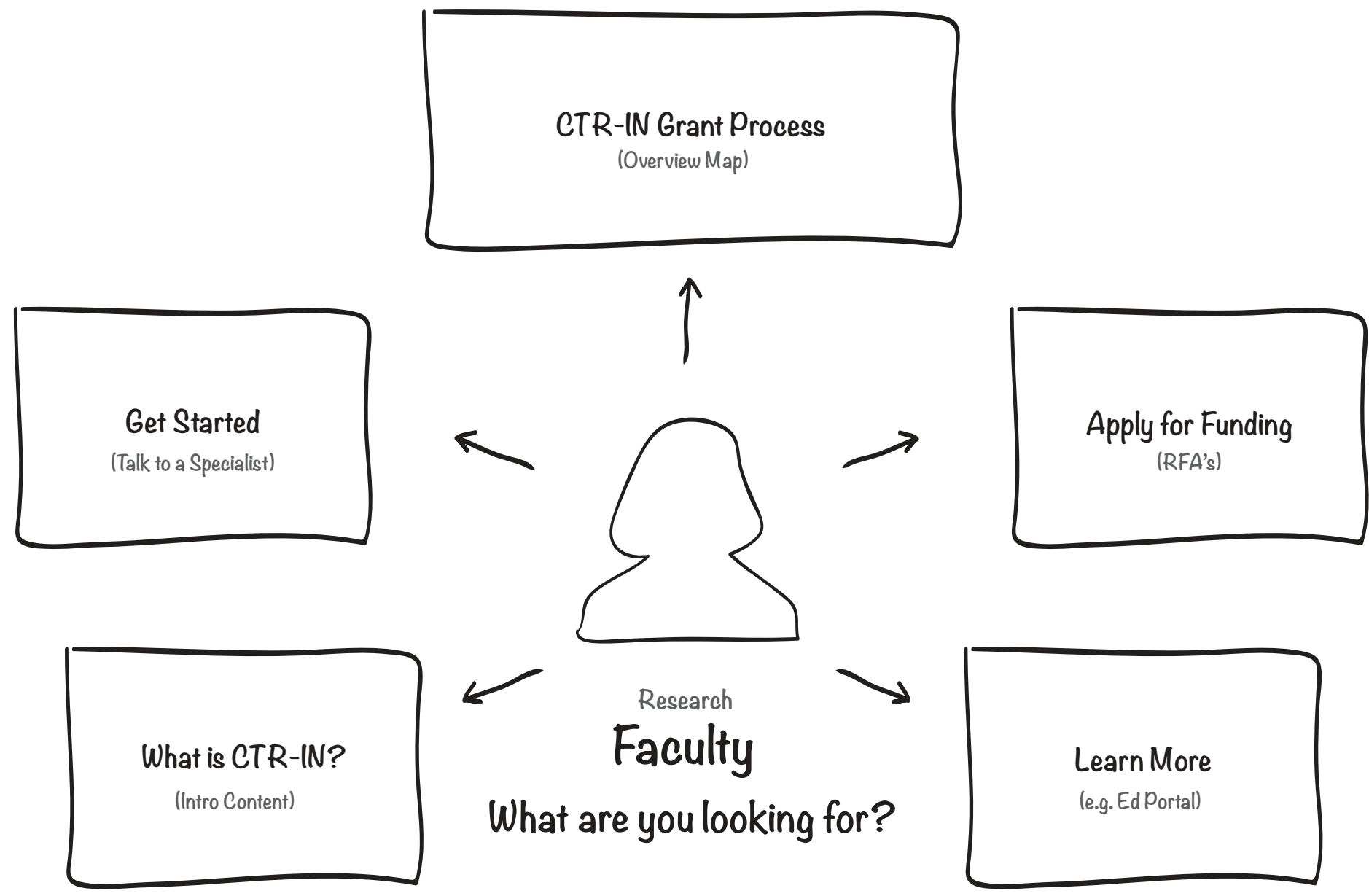
© Copyright 2016 - Clinical Translational Research Infrastructure Network

CTR-IN Grants Pipeline ...





How can we make it **simpler** and **easier**
for prospective investigators to *fully understand*
all of the resources and assistance that CTR-IN offers?



USER-CENTERED STRUCTURE MAP



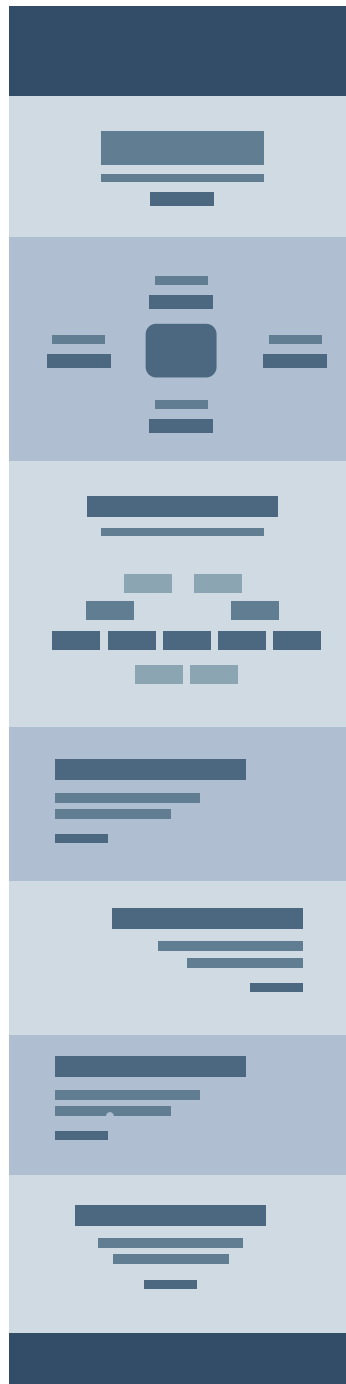
**PROSPECTIVE
INVESTIGATORS**



**GRANT
RESOURCES**



**PROSPECTIVE
INVESTIGATORS**



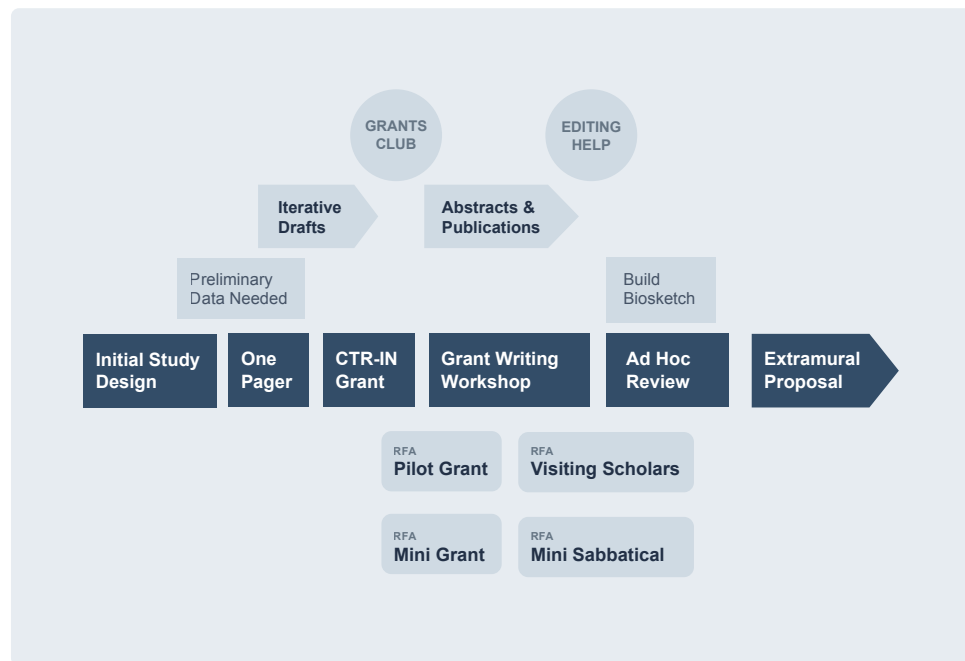
**NEW CTR-IN GRANT
RESOURCES WEB PAGE**



**GRANT
RESOURCES**



New User Centered Navigation



Interactive Grant Pipeline Overview Map



Browse ▾

Resource link

Resource link

Search 🔍

Find a Specialist to Talk To

The best way to get started is to talk to someone within the CTR-IN network with experience to answer your questions and guide you through the process. Start by contacting your local concierge. If you are looking for a mentor or collaborator, try our VIVO search tool. We have biostatisticians on hand ready to help you get started.

[Find a Local Concierge](#) [Find a Biostatistician](#) [Find a Mentor](#)

Structured Content Blocks with Big Buttons

ONE INTERFACE WITH MULTIPLE DESIGN PATTERNS

CLINICAL TRANSLATIONAL RESEARCH

Home | About CTR-IN | News | Contact Us | Privacy | Accessibility

CTR-IN Grant Resources

All CTR-IN Grant Resources in One Place
Right Here, Right Now

Get Started

Get Started | Get CTR-IN Funding | Get CTR-IN Funding | Get CTR-IN Funding | Get CTR-IN Funding

Interested in Clinical & Translational Research?

Research Faculty

CTR-IN Grant Pipeline Overview Map

Initial Study Design | One Page | CTR-IN Grant | Grant Writing Workshop | Ad Hoc Review | Extramural Proposal

What is CTR-IN?

Find a Specialist to Talk To

Apply for CTR-IN Grant Awards

Achieve Your Research Goals

Sustainable Impactful Independent Extramurally Supported Research

Want to Learn More?

UNIV

CLINICAL TRANSLATIONAL RESEARCH

Home | About CTR-IN | News | Contact Us | Privacy | Accessibility

CTR-IN Grant Resources

All CTR-IN Grant Resources in One Place
Right Here, Right Now

Get Started

Get Started | Get CTR-IN Funding | Get CTR-IN Funding | Get CTR-IN Funding | Get CTR-IN Funding

Interested in Clinical & Translational Research?

Research Faculty

CTR-IN Grant Pipeline Overview Map

Initial Study Design | One Page | CTR-IN Grant | Grant Writing Workshop | Ad Hoc Review | Extramural Proposal

What is CTR-IN?

Find a Specialist to Talk To

Apply for CTR-IN Grant Awards

Achieve Your Research Goals

Sustainable Impactful Independent Extramurally Supported Research

Want to Learn More?

UNIV

CLINICAL TRANSLATIONAL RESEARCH

Home | About CTR-IN | News | Contact Us | Privacy | Accessibility

CTR-IN Grant Resources

All CTR-IN Grant Resources in One Place
Right Here, Right Now

Get Started

Get Started | Get CTR-IN Funding | Get CTR-IN Funding | Get CTR-IN Funding | Get CTR-IN Funding

Interested in Clinical & Translational Research?

Research Faculty

CTR-IN Grant Pipeline Overview Map

Initial Study Design | One Page | CTR-IN Grant | Grant Writing Workshop | Ad Hoc Review | Extramural Proposal

What is CTR-IN?

Find a Specialist to Talk To

Apply for CTR-IN Grant Awards

Achieve Your Research Goals

Sustainable Impactful Independent Extramurally Supported Research

Want to Learn More?

UNIV

CTR-IN Grant Resources

All CTR-IN Grant Resources in One Place
 Right Here, Right Now

I am looking for...



Get Oriented

Explore the CTR-IN Grant Overview Map



Get Started

Find Someone to Talk To



Get CTR-IN Funding

Apply for Funding



Introduction

Learn About CTR-IN



Get Extramural Funding

Achieve Your Goals

Research Faculty

Interested in Clinical & Translational Research?

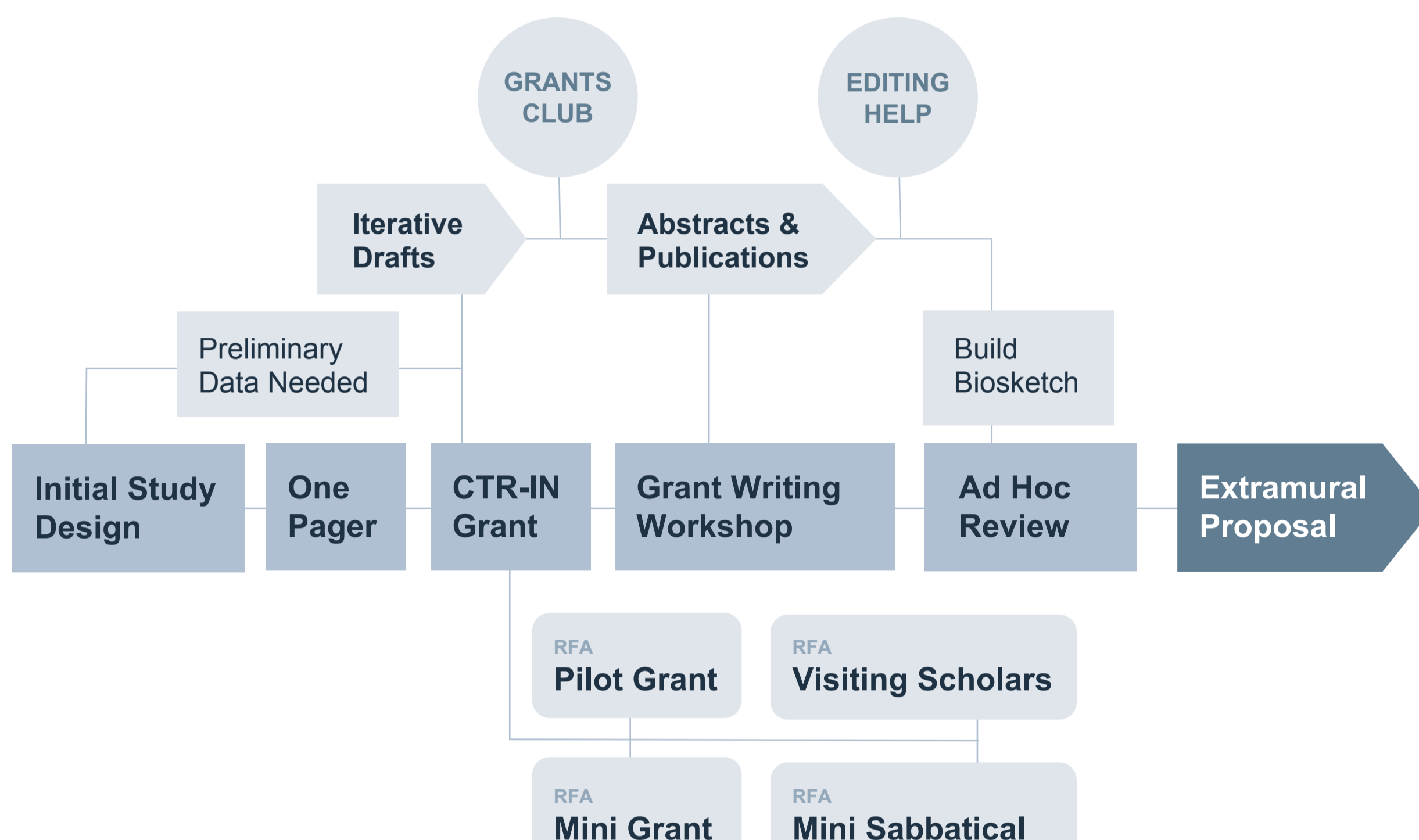
Find the CTR-IN support resources you need here.

Search



CTR-IN Grant Pipeline Overview Map

CTR-IN provides a network of support & resources. Here is an at-a-glance overview of the CTR-IN Grant process.



What is CTR-IN?

The Clinical Translational Research Infrastructure Network (CTR-IN) provides funding support and resources to help faculty at one of the Mountain West Consortium Institutions interested in clinical and translational research get extramural funding.

Get Started by Talking to Someone



Find a Specialist to Talk To

The best way to get started is to talk to someone within the CTR-IN network with experience to answer your questions and guide you through the process. Start by contacting your local concierge. If you are looking for a mentor or collaborator, try our VIVO search tool. We have biostatisticians on hand ready to help you get started.

Find a Local Concierge

Find a Biostatistician

Find a Mentor



Apply for CTR-IN Grant Awards

CTR-IN offers a variety of funding support and opportunities including a Pilot Grant, Mini Grant, Visiting Scholars, and Mini Sabbaticals.

Pilot Grant RFA

Mini Grant RFA

Visiting Scholars RFA

Mini Sabbaticals RFA



Achieve Your Research Goals

Your goal is to do research that will change lives. Our goal is to help prepare you to secure ongoing, sustainable, extramural funding.

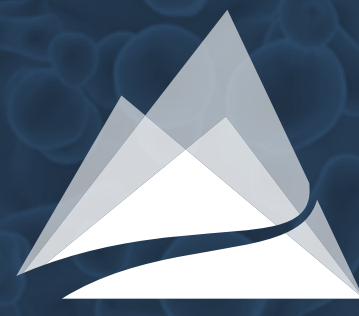
Sustainable Impactful Independent
 Extramurally Supported Research

Want to Learn More?

Looking for more information? The CTR-IN web site is a great place to start. It contains all that you need and more, including the CTR-IN education portal.

Go to the CTR-IN Web Site

Go to the Education Portal



CTR-IN Grant Resources

Find all CTR-IN Grant Resources
 Right Here, Right Now

I am looking for...



Interested in Clinical & Translational Research?

Find the CTR-IN support resources you need here.

I am searching for...



CTR-IN Grant Pipeline Overview Map

CTR-IN provides a network of support & resources.
 Here is an at-a-glance overview of the CTR-IN Grant process.



What is CTR-IN?

The Clinical Translational Research Infrastructure Network (CTR-IN) provides funding support and resources to help faculty at one of the Mountain West Consortium Institutions interested in clinical and translational research get extramural funding.

Get Started by Talking to Someone



Find a Specialist to Talk To

The best way to get started is to talk to someone within the CTR-IN network with experience to answer your questions and guide you through the process. Start by contacting your local concierge. If you are looking for a mentor or collaborator, try our VIVO search tool. We have biostatisticians on hand ready to help you get started.

- Find a Local Concierge
- Find a Biostatistician
- Find a Mentor



CTR-IN Grant Awards

CTR-IN offers a variety of funding support and opportunities including a Pilot Grant, Mini Grant, Visiting Scholars, and Mini Sabbaticals.

- Pilot Grant RFA
- Mini Grant RFA
- Visiting Scholars RFA
- Mini Sabbaticals RFA



Achieve Your Research Goals

Your goal is to do research that will change lives. Our goal is to help prepare you to secure ongoing, sustainable, extramural funding.

Sustainable Impactful Independent
 Extramurally Supported Research

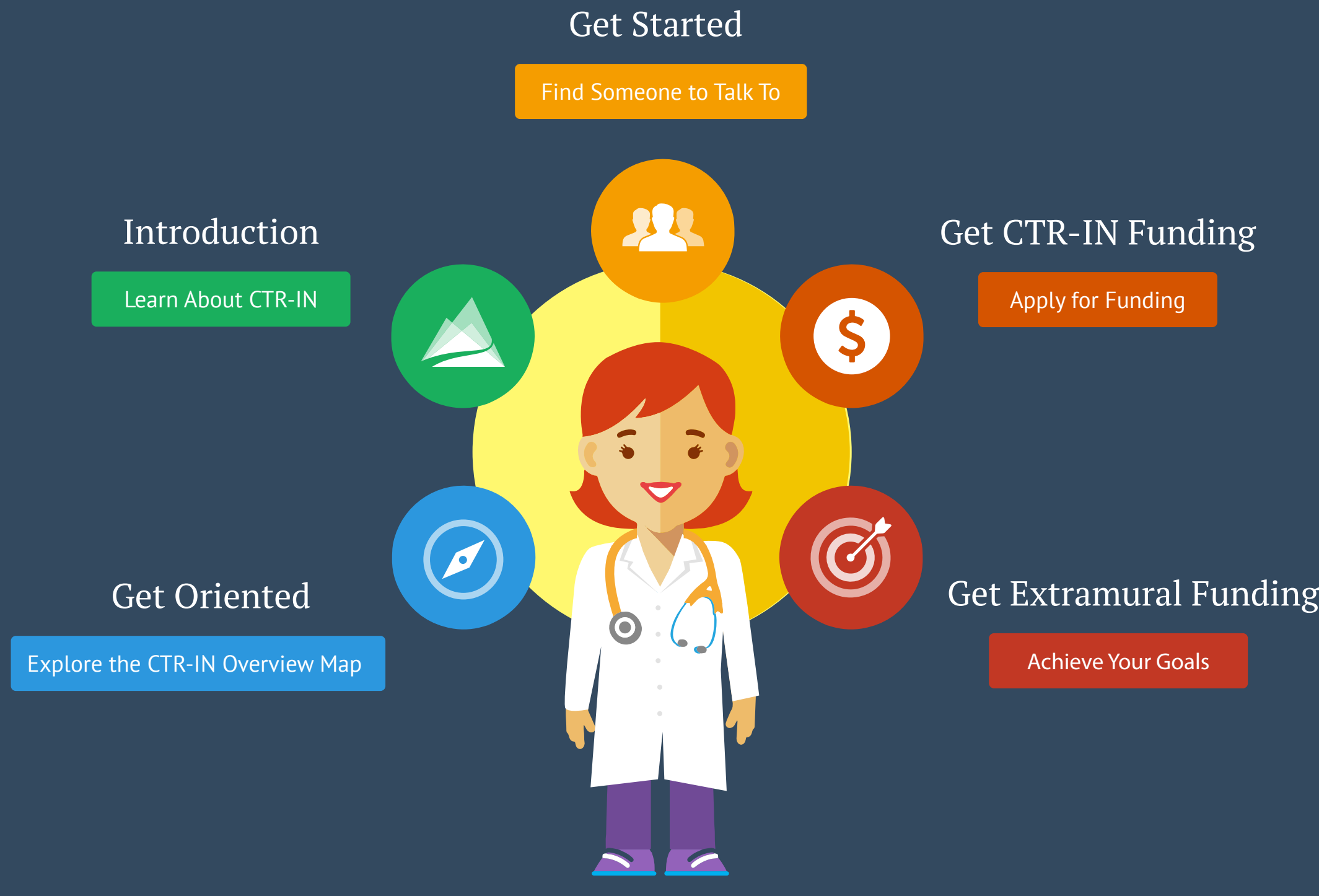
Want to Learn More?

Looking for more information? The CTR-IN web site is a great place to start. It contains all that you need and more, including the CTR-IN education portal.

- Go to the CTR-IN Web Site
- Go to the Education Portal

CTR-IN Grant Resources

Find all CTR-IN Grant Resources
 Right Here, Right Now



Research Faculty Interested in Clinical & Translational Research
 Find the CTR-IN support resources you need here.

Browse for... Search for...



CTR-IN Grant Pipeline Overview Map

CTR-IN provides a network of support & resources.
 Here is an at-a-glance overview of the CTR-IN Grant process.



What is CTR-IN?

The Clinical Translational Research Infrastructure Network (CTR-IN) provides funding support and resources to help faculty at one of the Mountain West Consortium Institutions interested in clinical and translational research get extramural funding.

Get Started by Talking to Someone



Find a Specialist to Talk To

The best way to get started is to talk to someone within the CTR-IN network with experience to answer your questions and guide you through the process. Start by contacting your local concierge. If you are looking for a mentor or collaborator, try our VIVO search tool. We have biostatisticians on hand ready to help you get started.

- Find a Local Concierge Find a Biostatistician Find a Mentor



CTR-IN Grant Awards

CTR-IN offers a variety of funding support and opportunities including a Pilot Grant, Mini Grant, Visiting Scholars, and Mini Sabbaticals.

- Pilot Grant RFA Mini Grant RFA Visiting Scholars RFA Mini Sabbaticals RFA



Achieve Your Research Goals

Your goal is to do research that will change lives. Our goal is to help prepare you to secure ongoing, sustainable, extramural funding.

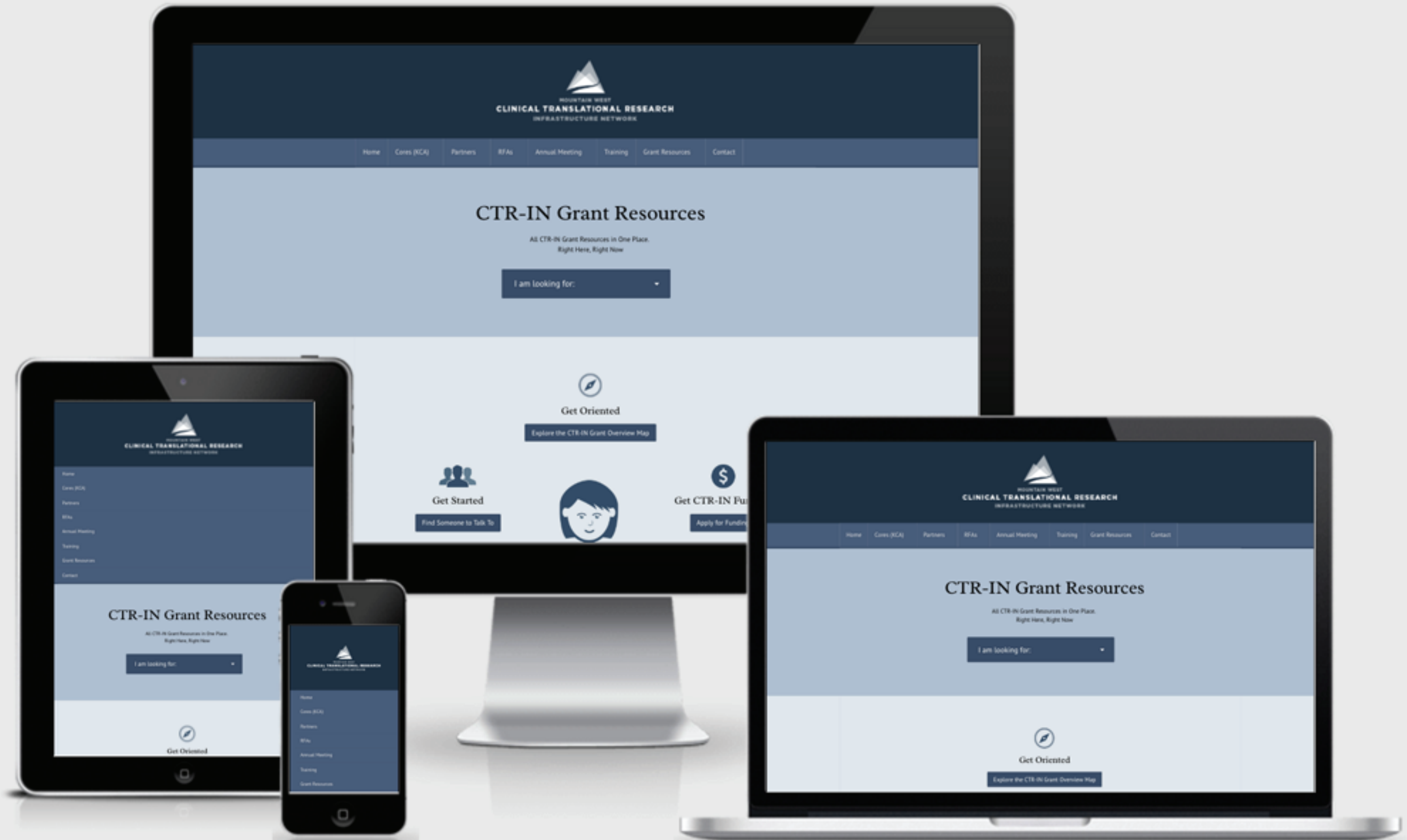
Sustainable Impactful Independent
 Extramurally Supported Research

Want to Learn More?

Looking for more information? The CTR-IN web site is a great place to start. It contains all that you need and more, including the CTR-IN education portal.

- Go to the CTR-IN Web Site Go to the Education Portal





CTR-IN Grant Resources

All CTR-IN Grant Resources in One Place.
Right Here, Right Now

I am looking for:



Get Oriented

Explore the CTR-IN Grant Overview Map



Get Started

Find Someone to Talk To



Get CTR-IN Funding

Apply for Funding

CTR-IN Grant Resources

All CTR-IN Grant Resources in One Place.
Right Here, Right Now

I am looking for:



Get Oriented

Explore the CTR-IN Grant Overview Map

CTR-IN Grant Resources

All CTR-IN Grant Resources in One Place.
Right Here, Right Now

I am looking for:



Get Oriented



**ALL
USERS**



**NEW MW-CTRIN
WEB SITE RE-DESIGN**



**TARGET
CONTENT**



How can we make it simpler and easier
for *all target MW-CTRIN users* to achieve thier goals
for *all content* on the MW-CTR-IN web site?

How can we improve the MW-CTRIN brand to
more accurately reflect the MW-CTRIN grant?

1



DISCOVER



2



DRAFT



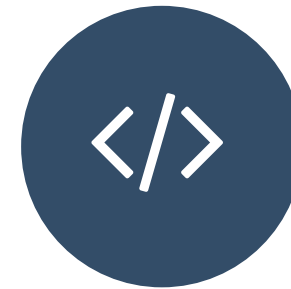
3



DESIGN



4



DEVELOP



5



DELIVER

IA



**INFORMATION
ARCHITECTURE**



UX



**USER
EXPERIENCE**



UI



**USER
INTERFACE DESIGN**

Timeline Map

Phase 1:
Definition



Project Brief
A Summary



Questionnaire
Online form

[Open Form](#)

Phase 2:
Draft



Logo Sketches
Branding

[View PDF](#)



Site Map
(IA)

[View PDF](#)



Wireframes
(UX)

[View PDF](#)



Style Tiles
(UI)

[View PDF](#)

CONCEPTUAL DESIGN DIRECTIONS



“EXISTING”

Based upon the current MW CTR-IN logo & web site and preserves the existing look and feel of the existing MW CTR-IN site (think shades of blue), but redesigned with strong typography, improved layout, and better presentation of content.



“SIMPLE”

Tries to take something complex, like the current MW CTR-IN site, and simplify it using web standards, best practices, and evidence based design decisions that are known to increase usability

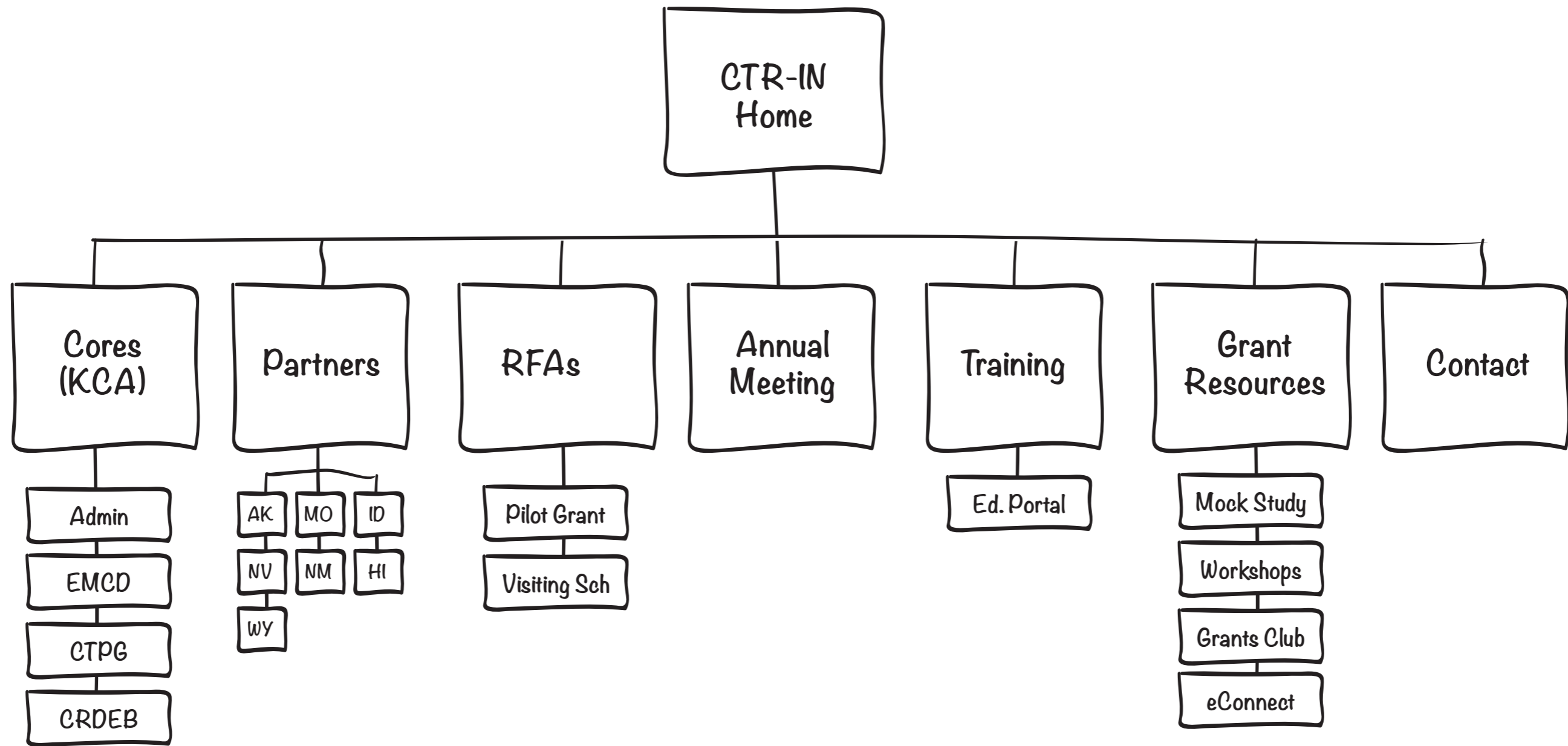


“USER CENTERED”

An extension of the user-centered design approach that I showed earlier, but used as a central theme for the entire site, not just the grant resources. An example of this would be a navigational system like this using actionable language that speaks directly to the user.



“EXISTING”



Legend:
□ Page Template



Welcome to the MW CTR-IN

Mountain West IDeA Clinical and Translational Research – Infrastructure Network (CTR-IN)

On behalf of the University of Nevada, Las Vegas and our 13 university partners it is my pleasure to welcome you to the virtual space that is the core of our consortium. We are pleased to announce that the Mountain West CTR-IN was funded effective September 15, 2013! This initial cycle will run through June 30, 2018.



OUR MISSION

Sustainable Impactful Independent Extramurally Supported Research



To accelerate the development of capacity, and the necessary institutional culture change.



To increase the quantity, quality, and number of successful NIH grant applications in clinical and translational research



To accelerate scientific discovery to improve health in the 7 Mountain West IDeA states regions.



ABOUT

Hosted at the University of Nevada, Las Vegas (UNLV), our CTR-IN is supported by the NIH through the National Institute of General Medical Sciences (NIGMS) #1U54GM104944-O1A1 under the Institutional Development Award (IDeA) program. The IDeA CTR awards are focused on the development of clinical and transla-

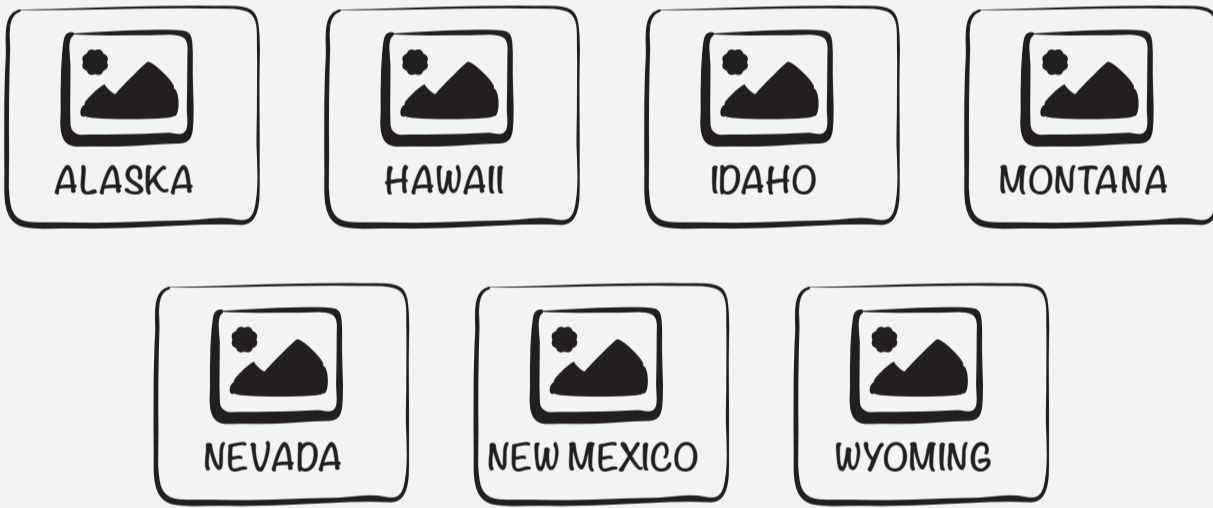
tional research capacity in IDeA states. The Mountain West CTR-IN will accomplish this by providing a range of services that will help investigators with faculty appointments at partner institutions develop the skills and experience to conduct clinical or translational research. CTR-IN Cores will provide those services (see list below).



PARTNERS

The CTR program encourages partnerships between institutions with limited expertise and infrastructure for clinical and translational research and established clinical and translational centers, including institutions with Clinical and Translational Science Awards (CTSAs) and Research Centers in Minority Institutions (RCMIs). We are

fortunate to have both a CTSA and an RCMi partner graciously lending their expertise. We join 4 other CTRs across the nation, those at the West Virginia University and Louisiana State University were funded in the fall of 2012, while ours, the University of Oklahoma and the University of Delaware were funded in the fall of 2013.

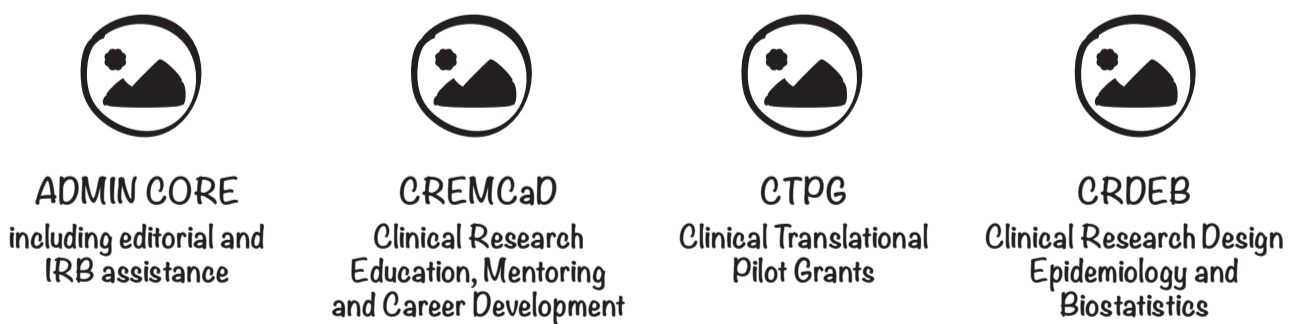


The Mountain West CTR-IN is hosted at the University of Nevada, Las Vegas. It was developed as an activity of the Mountain West Research Consortium (MWRC) and represents a partnership among the following 13 universities across our 7 states:

- University of Alaska – Anchorage
- University of Alaska – Fairbanks
- University of Hawaii – Manoa (RCMI partner)
- Boise State University
- Idaho State University
- University of Idaho
- Montana State University
- University of Montana
- University of Nevada, Las Vegas (host)
- University of Nevada Reno, including the University of Nevada School of Medicine
- New Mexico State University
- University of New Mexico (CTSA partner)
- University of Wyoming



CTR-IN CORE RESOURCES



SITE MAP

MW CTR-IN	Cores (KCA)	Partners	RFA's
MW CTR-IN Home	Administrative Core EMCO CTPS CRDEB	Alaska Montana Idaho Nevada New Mexico Hawaii Wyoming	Pilot Grant Visiting Scholars
Annual Meeting	Training	Grant Resources	Contact
Annual Meeting Info	Education Portal	Mock Study Workshops Grants Club eConnect	Contact Us

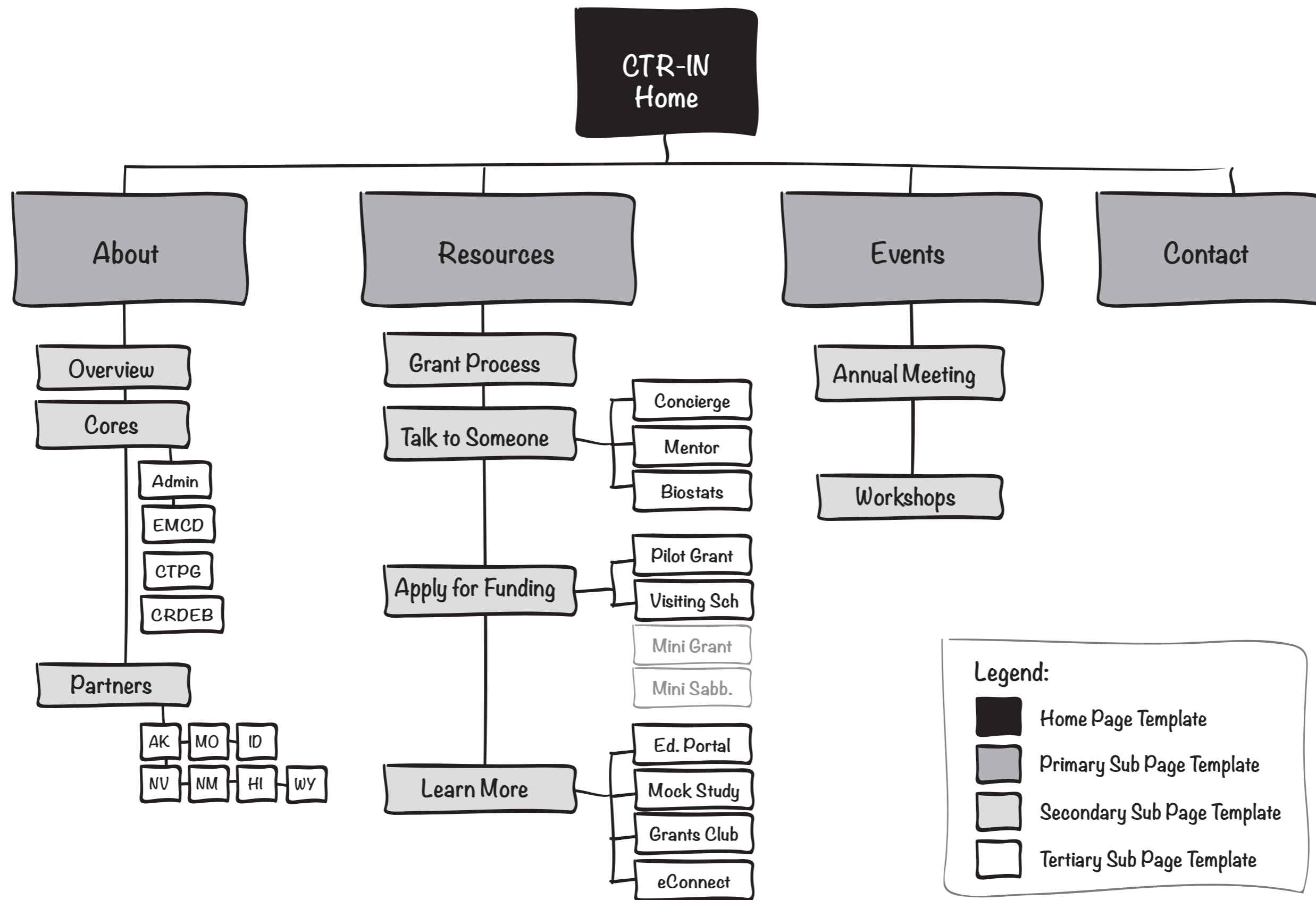


Funded by a grant from the National Institute of General Medical Sciences of the National Institutes of Health: #1U54GM104944

UNLV



“SIMPLE”



Legend:

- Home Page Template
- Primary Sub Page Template
- Secondary Sub Page Template
- Tertiary Sub Page Template



Mountain West CTR-IN

Clinical Translational Research Infrastructure Network

The Mountain West (MW) Clinical Translational Research Infrastructure Network (CTR-IN) provides funding support and resources to help faculty at one of the Mountain West Consortium Institutions interested in clinical and translational research attain extramural funding.

About MW CTR-IN

Grant Resources



ABOUT



GRANT RESOURCES



EVENTS



CONTACT

ABOUT

What is MW CTR-IN?

CTR-IN stands for Clinical Translational Research Infrastructure Network. Our mission is to provide funding support and resources to help faculty at one of the Mountain West Consortium Institutions interested in clinical and translational research get extramural funding.

Learn More About MW CTR-IN

Explore our Grant Resources



The MW CTR-IN Mission

Sustainable Impactful Independent Extramurally Supported Research



To accelerate the development of capacity, and the necessary institutional culture change.



To increase the quantity, quality, and number of successful NIH grant applications in clinical and translational research



To accelerate scientific discovery to improve health in the 7 Mountain West IDeA states regions.



Partners



ALASKA



HAWAII



IDAHO



MONTANA



NEVADA



NEW MEXICO



WYOMING

What is the MW Consortium?

The Mountain West Consortium is an academic partnership consisting of twelve institutions across seven western united states from Alaska to Montana to Hawaii. It is hosted at the University of Nevada, Las Vegas.

See All MW Partners

GRANT RESOURCES

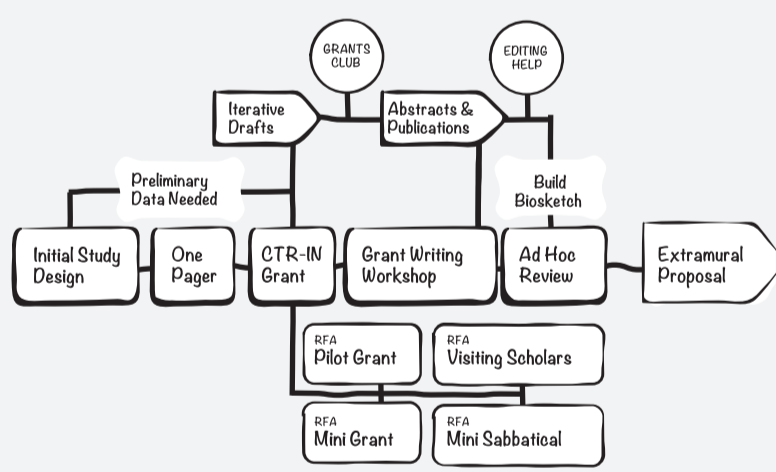


CTR-IN

Grant Process

CTR-IN provides a network of support & resources. Here is an at-a-glance overview of the CTR-IN Grant process.

Explore our Grant Resources



GET STARTED

Find Someone to Talk To



GET SUPPORT

Explore the CTR-IN Grant Process



GET CTR-IN FUNDING

Apply for Funding

EVENTS



Latest News & Events



Visiting Scholars Hall of Fame

Check out our new Round 02 Visiting Scholar Awardees - Where do they come from, and where are they going ...

Read More ...



eCT Connect Work - A virtual collaboration

Build a Multi-Site Collaboration with eCT Connect Work!

Read More ...



In the Spotlight: Round 3 Pilot Grant Awardees

Congratulations to our year 3 Awardees! ...

Read More ...

About MW CTR-IN

Overview
Cores
Partners

Grant Resources

Talk to Someone
Apply for Funding
Learn More

Events

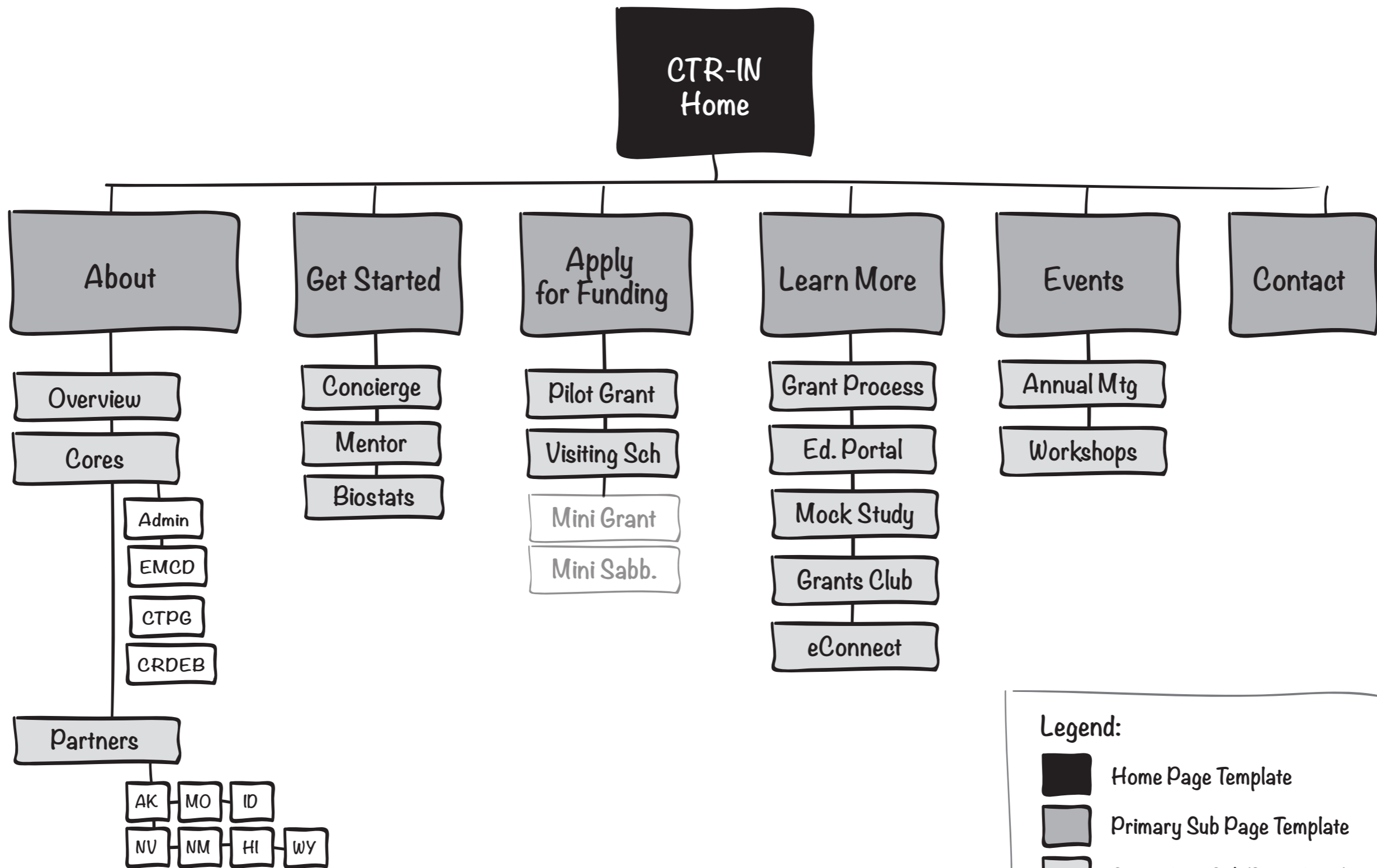
Annual Meeting
Workshops

Contact

To contact the CTR-IN Administrative Core by phone, you may call 702.895.1079 8:30 a.m. to 5:30 p.m., Monday - Friday, excluding holidays. Or, you may email us at ctr-in@unlv.edu at any time.



“USER CENTERED”



Legend:

- Home Page Template
- Primary Sub Page Template
- Secondary Sub Page Template
- Tertiary Sub Page Template



Mountain West CTR-IN

Clinical Translational Research Infrastructure Network

The Mountain West (MW) Clinical Translational Research Infrastructure Network (CTR-IN) provides funding support and resources to help faculty at one of the Mountain West Consortium Institutions interested in clinical and translational research attain extramural funding.

GET SUPPORT
Explore the CTR-IN Grant Process

GET CTR-IN FUNDING
Apply for Funding

GET EXTRAMURAL FUNDING
Achieve Your Goals

GET STARTED
Find Someone to Talk To

INTRODUCTION
Learn about CTR-IN

Faculty
Interested in Clinical and Translational Research?
Find the CTR-IN support resources you need here:
I am looking for... [dropdown]

- ABOUT
- GET STARTED
- APPLY FOR FUNDING
- LEARN MORE
- EVENTS
- CONTACT



What is MW CTR-IN?

The Clinical Translational Research Infrastructure Network (CTR-IN) provides funding support and resources to help faculty at one of the Mountain West Consortium Institutions interested in clinical and translational research get extramural funding.

Learn More About MW CTR-IN

Get Started by Talking to Someone



Talk to Someone

The best way to get started is to talk to someone within the CTR-IN network with experience to answer your questions and guide you through the process. Start by contacting your local concierge. If you are looking for a mentor or collaborator, try our VIVO search tool. We have biostatisticians on hand ready to help you get started.

Find a Local Concierge

Find a Biostatistician

Find a Mentor



CTR-IN Grant Awards

CTR-IN offers a variety of funding support and opportunities including a Pilot Grant, Mini Grant, Visiting Scholars, and Mini Sabbaticals.

Pilot Grant RFA

Visiting Scholars RFA



Want to Learn More?

Looking for more information? The CTR-IN web site is a great place to start. It contains all that you need and more, including the CTR-IN education portal.

Grant Process

Ed Portal

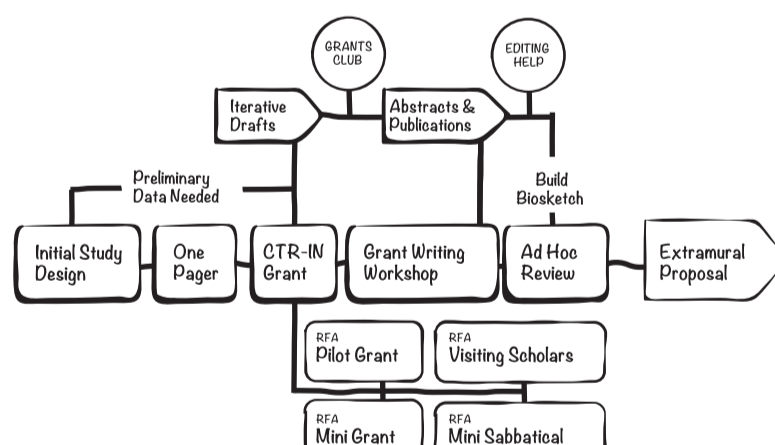
Learn More About MW CTR-IN



Grant Process

CTR-IN provides a network of support & resources. Here is an at-a-glance overview of the CTR-IN Grant process.

Explore All Grant Resources



The MW CTR-IN Mission

Sustainable Impactful Independent Extramurally Supported Research



To accelerate the development of capacity, and the necessary institutional culture change.



To increase the quantity, quality, and number of successful NIH grant applications in clinical and translational research



To accelerate scientific discovery to improve health in the 7 Mountain West IDeA states regions.



GET STARTED

Find Someone to Talk To



GET CTR-IN FUNDING

Apply for Funding



LEARN MORE

Explore the CTR-IN Grant Process

About MW CTR-IN

Overview
Cores
Partners

Grant Resources

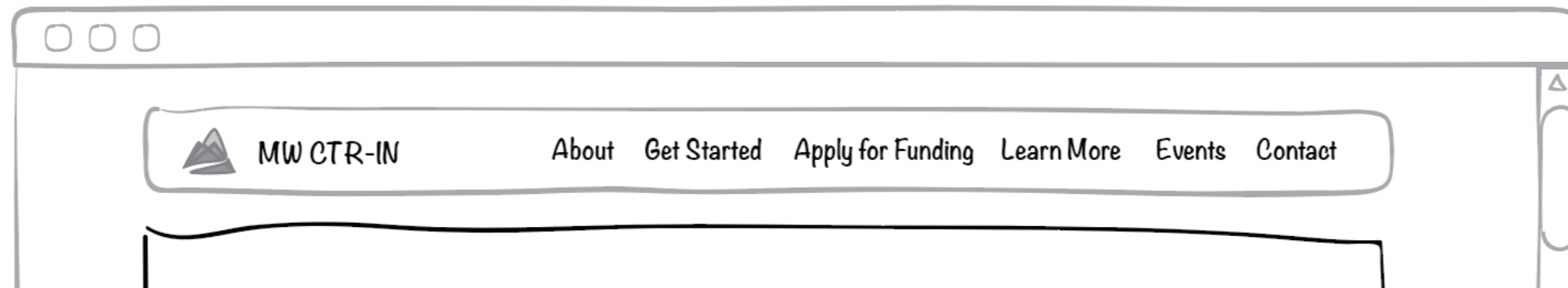
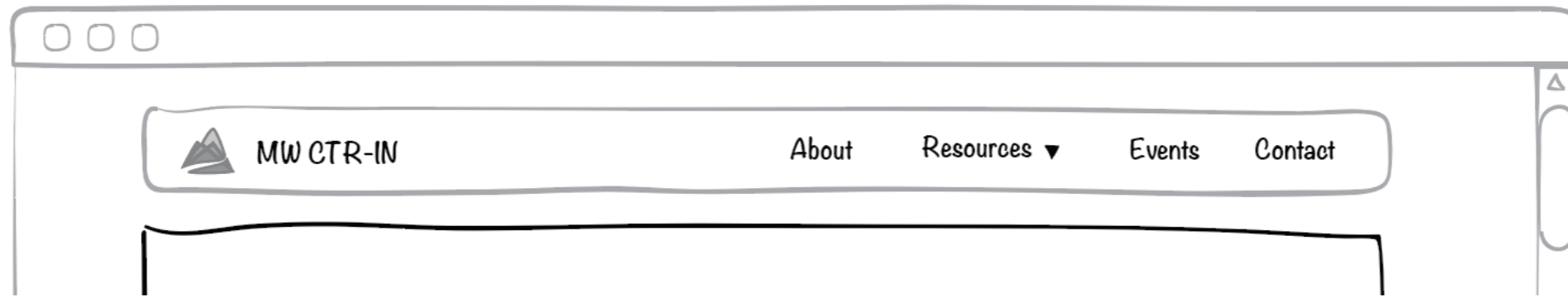
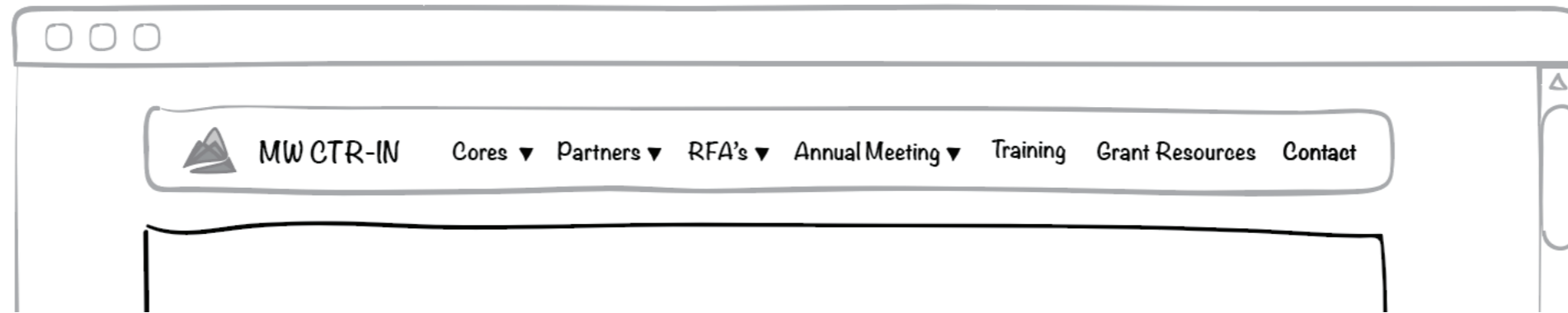
Talk to Someone
Apply for Funding
Learn More

Events

Annual Meeting
Workshops

Contact

To contact the CTR-IN Administrative Core by phone, you may call 702.895.1079 8:30 a.m. to 5:30 p.m., Monday - Friday, excluding holidays. Or, you may email us at ctr-in@univ.edu at any time.



STYLE TILE #1: "Existing"

Current CTR-IN Logo

No Reverse Color Options



Colors

Black & Blues



Typography

Radley + PT Sans

This is a Heading 1

This is a Heading 2

This is a Heading 3

This is a Heading 4

Lorem ipsum dolor sit amet, consectetur adipiscing elit. Duis ut fringilla ipsum, sed bibendum augue. Nullam euismod nec mauris elementum porta. Sed varius nisl eu lobortis fringilla. Morbi id elit sollicitudin, venenatis lacus id, cursus quam. Aliquam mollis orci vel enim fermentum

[Click Here](#)

STYLE TILE #1: "Existing"

Potential Site Header

Header w/ Centered Logo + Menu Bar below, Hero Section



Mountain West CTR-IN

Clinical Translational Research Infrastructure Network

The Mountain West (MW) Clinical Translational Research Infrastructure Network (CTR-IN) provides funding support and resources to help faculty at one of the Mountain West Consortium Institutions interested in clinical and translational research attain extramural funding.

[ABOUT MW CTR-IN](#)

[GRANT RESOURCES](#)

STYLE TILE #1: "Existing"

Potential Photography + Typography

Hero Section

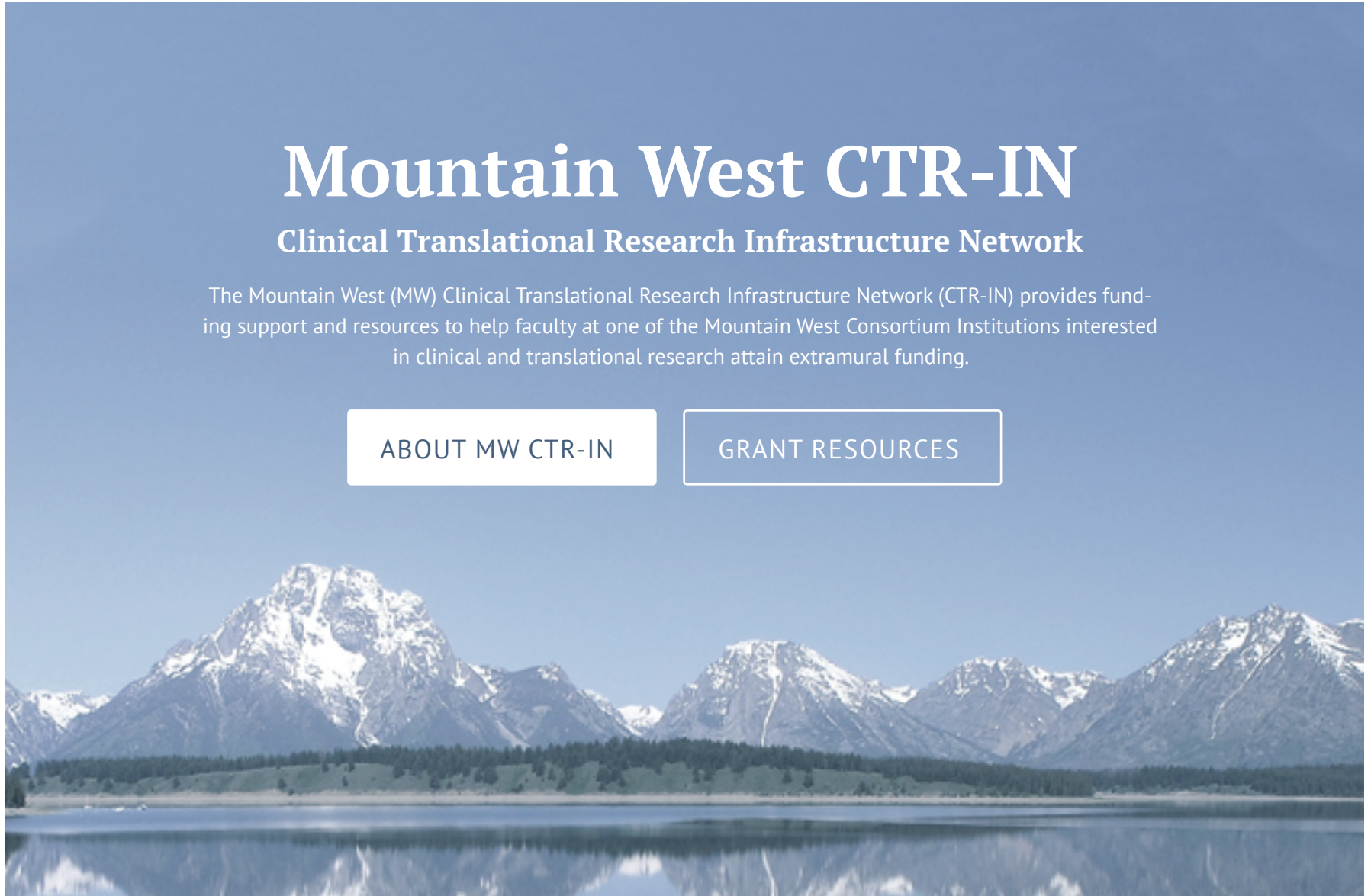
Mountain West CTR-IN

Clinical Translational Research Infrastructure Network

The Mountain West (MW) Clinical Translational Research Infrastructure Network (CTR-IN) provides funding support and resources to help faculty at one of the Mountain West Consortium Institutions interested in clinical and translational research attain extramural funding.

[ABOUT MW CTR-IN](#)

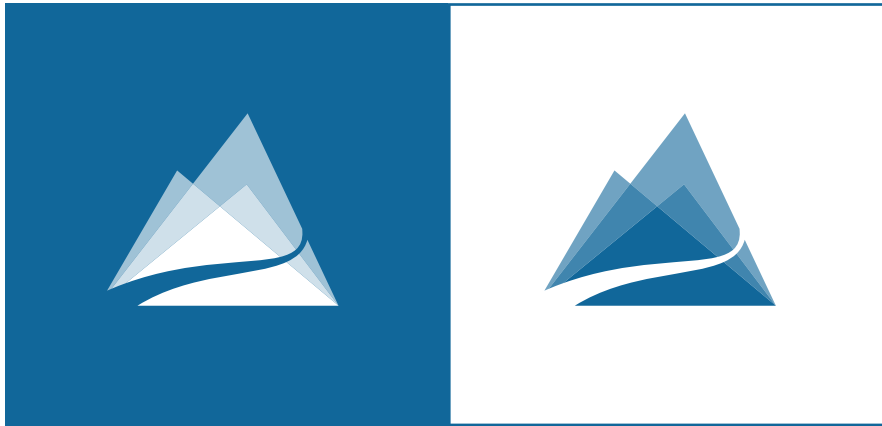
[GRANT RESOURCES](#)



STYLE TILE #2: "Safe & Minimal" Blues & Greys

Revised CTR-IN Logo

Monochromatic



Colors

Blues & Greys



Typography

Open Sans

This is a Heading 1

This is a Heading 2

This is a Heading 3

This is a Heading 4

Lorem ipsum dolor sit amet, consectetur adipiscing elit. Duis ut fringilla ipsum, sed bibendum augue. Nullam euismod nec mauris elementum porta. Sed varius nisl eu lobortis fringilla. Morbi id elit sollicitudin, venenatis lacus id, cursus quam. Aliquam mollis orci vel enim fermentum adipiscing. Duis facilisis lorem a nulla porttitor sagittis. Suspendisse pulvinar bibendum laoreet.

CLICK HERE

CLICK HERE

STYLE TILE #2: "Safe & Minimal" Blues & Greys

Potential Site Header & Typography

Header + Menu Bar, Hero Section



[Home](#) [About](#) [Resources](#) [Contact](#) 

Mountain West CTR-IN

Clinical Translational Research Infrastructure Network

The Mountain West (MW) Clinical Translational Research Infrastructure Network (CTR-IN) provides funding support and resources to help faculty at one of the Mountain West Consortium Institutions interested in clinical and translational research attain extramural funding.

[ABOUT MW CTR-IN](#)

[GRANT RESOURCES](#)

STYLE TILE #2: "Safe & Minimal" Blues & Greys

Potential Photography + Typography

Hero Section

Mountain West CTR-IN

Clinical Translational Research Infrastructure Network

The Mountain West (MW) Clinical Translational Research Infrastructure Network (CTR-IN) provides funding support and resources to help faculty at one of the Mountain West Consortium Institutions interested in clinical and translational research attain extramural funding.

[ABOUT MW CTR-IN](#)

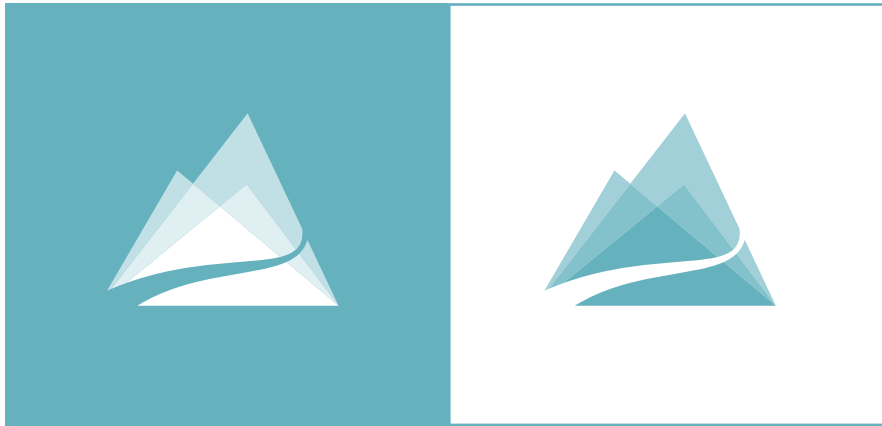
[GRANT RESOURCES](#)



STYLE TILE #3: "Medical" Blues & Greens

Revised CTR-IN Logo

Monochromatic



Colors

Blues & Greys



Typography

Raleway

This is a Heading 1

This is a Heading 2

This is a Heading 3

This is a Heading 4

Lorem ipsum dolor sit amet, consectetur adipiscing elit. Duis ut fringilla ipsum, sed bibendum augue. Nullam euismod nec mauris elementum porta. Sed varius nisl eu lobortis fringilla. Morbi id elit sollicitudin, venenatis lacus id, cursus quam. Aliquam mollis orci vel enim fermentum adipiscing. Duis facilisis lorem a nulla porttitor sagittis. Suspendisse pulvinar bibendum laoreet.

Click Here

Click Here

STYLE TILE #3: "Medical" Blues & Greens

Potential Site Header & Typography

Header + Menu Bar, Hero Section



Mountain West CTR-IN

Clinical Translational Research Infrastructure Network

The Mountain West (MW) Clinical Translational Research Infrastructure Network (CTR-IN) provides funding support and resources to help faculty at one of the Mountain West Consortium Institutions interested in clinical and translational research attain extramural funding.

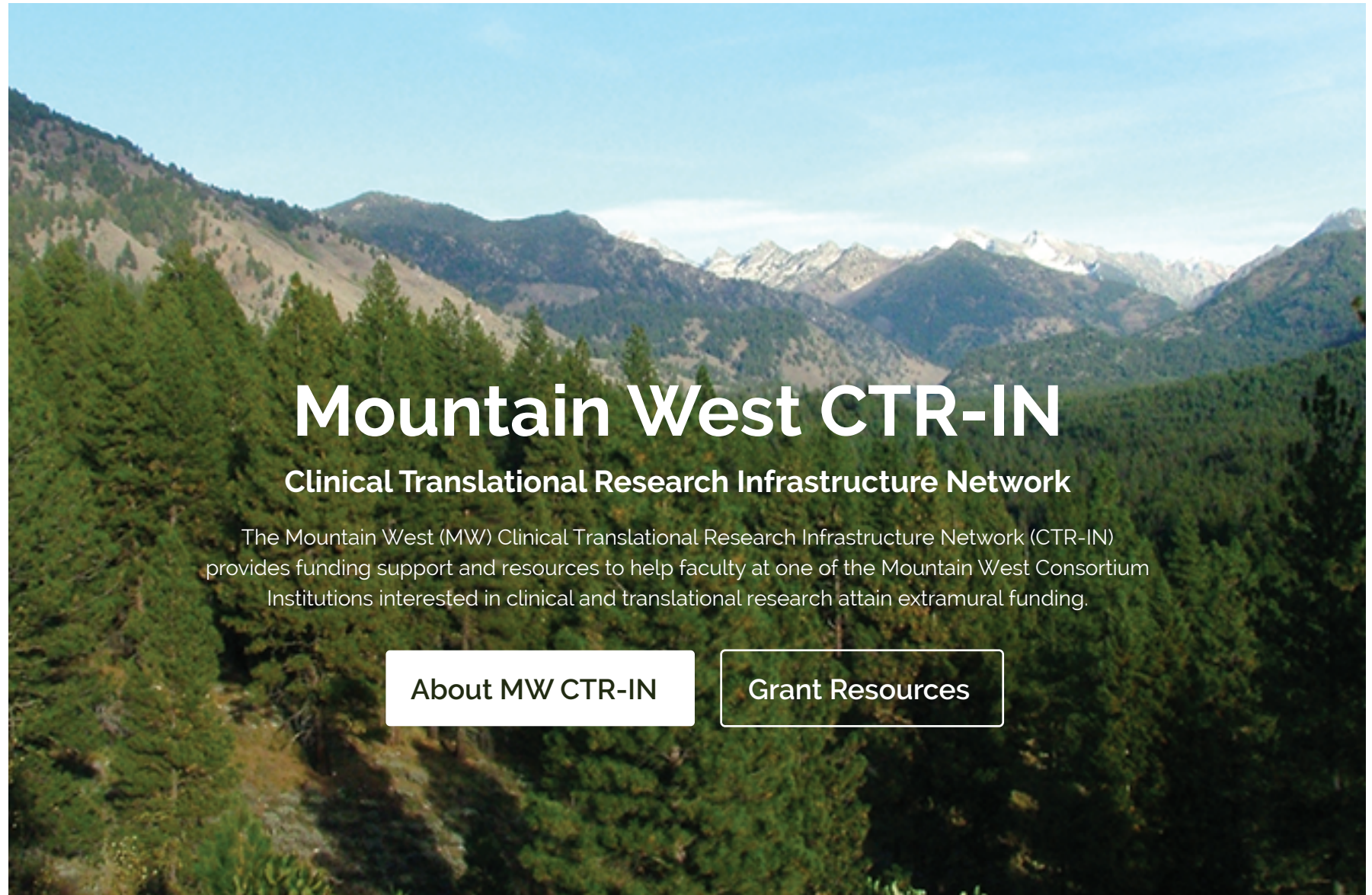
[About MW CTR-IN](#)

[Grant Resources](#)

STYLE TILE #3: "Medical" Blues & Greens

Potential Photography + Typography

Hero Section



Mountain West CTR-IN

Clinical Translational Research Infrastructure Network

The Mountain West (MW) Clinical Translational Research Infrastructure Network (CTR-IN) provides funding support and resources to help faculty at one of the Mountain West Consortium Institutions interested in clinical and translational research attain extramural funding.

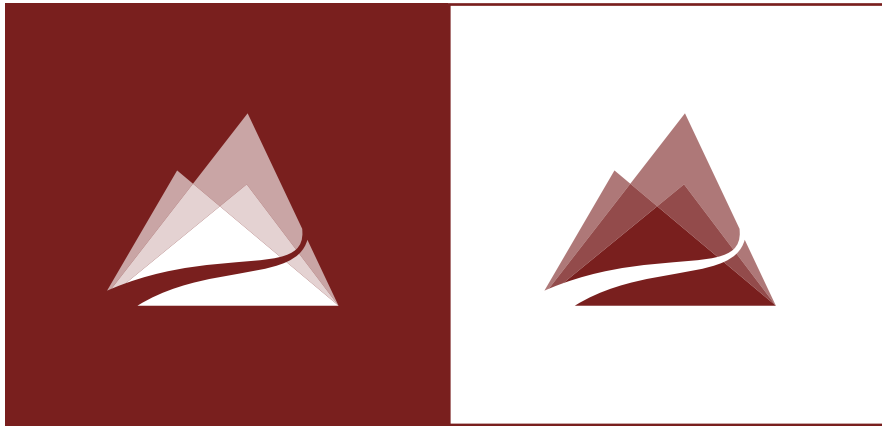
[About MW CTR-IN](#)

[Grant Resources](#)

STYLE TILE #4: "Academic" Red & Greys

Revised CTR-IN Logo

Monochromatic



Colors

Blues & Greys



Typography

Helvetica Neue

This is a Heading 1

This is a Heading 2

This is a Heading 3

This is a Heading 4

Lorem ipsum dolor sit amet, consectetur adipiscing elit. Duis ut fringilla ipsum, sed bibendum augue. Nullam euismod nec mauris elementum porta. Sed varius nisl eu lobortis fringilla. Morbi id elit sollicitudin, venenatis lacus id, cursus quam. Aliquam mollis orci vel enim fermentum adipiscing. Duis facilisis lorem a nulla porttitor sagittis. Suspendisse pulvinar bibendum laoreet.

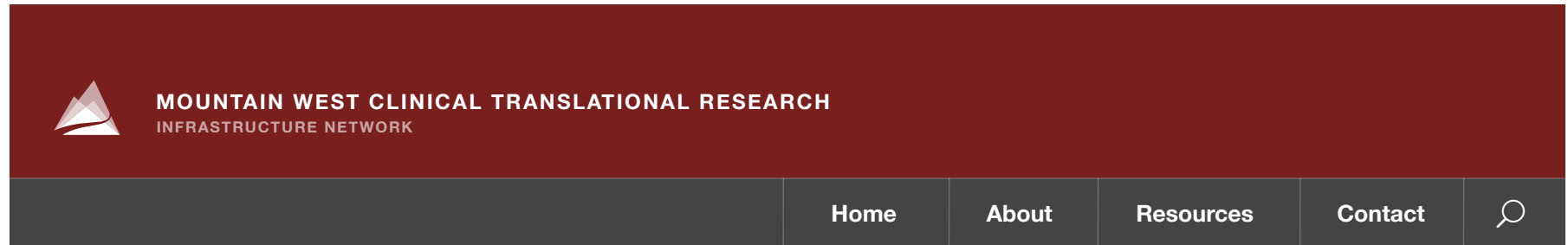
CLICK HERE

CLICK HERE

STYLE TILE #4: "Academic" Red & Greys

Potential Site Header & Typography

Header + Menu Bar below, Hero Section



Mountain West CTR-IN

Clinical Translational Research Infrastructure Network

The Mountain West (MW) Clinical Translational Research Infrastructure Network (CTR-IN) provides funding support and resources to help faculty at one of the Mountain West Consortium Institutions interested in clinical and translational research attain extramural funding.

[ABOUT MW CTR-IN](#)

[GRANT RESOURCES](#)

STYLE TILE #4: "Academic" Red & Greys

Potential Photography + Typography

Hero Section



Mountain West CTR-IN

Clinical Translational Research Infrastructure Network

The Mountain West (MW) Clinical Translational Research Infrastructure Network (CTR-IN) provides funding support and resources to help faculty at one of the Mountain West Consortium Institutions interested in clinical and translational research attain extramural funding.

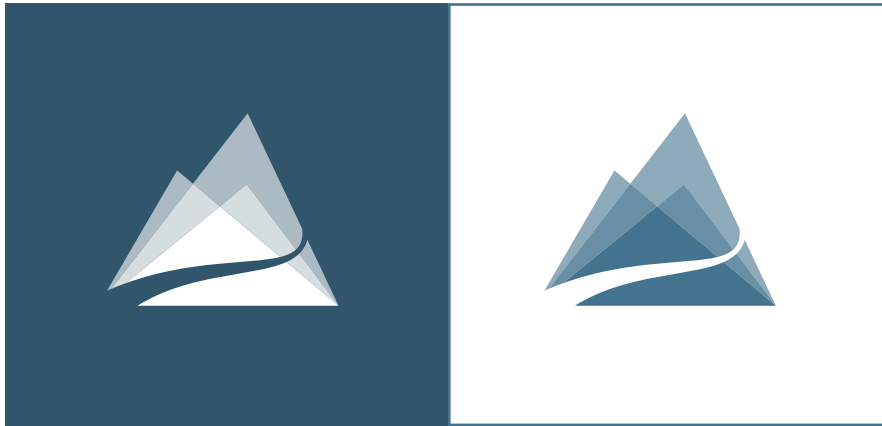
[ABOUT MW CTR-IN](#)

[GRANT RESOURCES](#)

STYLE TILE #5: "Earth Tones"

Revised CTR-IN Logo

Monochromatic



Colors

Blues & Greys



Typography

Arvo + PT Sans

This is a Heading 1

This is a Heading 2

This is a Heading 3

This is a Heading 4

Lorem ipsum dolor sit amet, consectetur adipiscing elit. Duis ut fringilla ipsum, sed bibendum augue. Nullam euismod nec mauris elementum porta. Sed varius nisl eu lobortis fringilla. Morbi id elit sollicitudin, venenatis lacus id, cursus quam. Aliquam mollis orci vel enim fermentum adipiscing. Duis facilisis lorem a nulla porttitor sagittis. Suspendisse pulvinar bibendum laoreet.

Click Here

Click Here

STYLE TILE #5: "Earth Tones"

Potential Site Header & Typography

Header w/ Centered Logo + Menu Bar below, Hero Section



Mountain West CTR-IN

Clinical Translational Research Infrastructure Network

The Mountain West (MW) Clinical Translational Research Infrastructure Network (CTR-IN) provides funding support and resources to help faculty at one of the Mountain West Consortium Institutions interested in clinical and translational research attain extramural funding.

[About MW CTR-IN](#)

[Grant Resources](#)

STYLE TILE #5: "Earth Tones"

Potential Photography + Typography

Hero Section

Mountain West CTR-IN

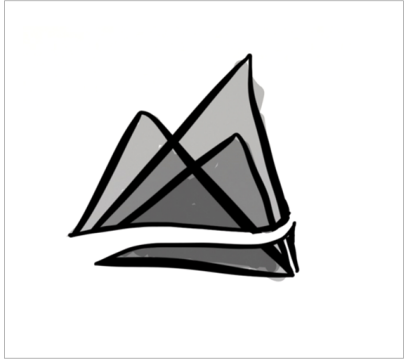
Clinical Translational Research Infrastructure Network

The Mountain West (MW) Clinical Translational Research Infrastructure Network (CTR-IN) provides funding support and resources to help faculty at one of the Mountain West Consortium Institutions interested in clinical and translational research attain extramural funding.

[About MW CTR-IN](#)

[Grant Resources](#)

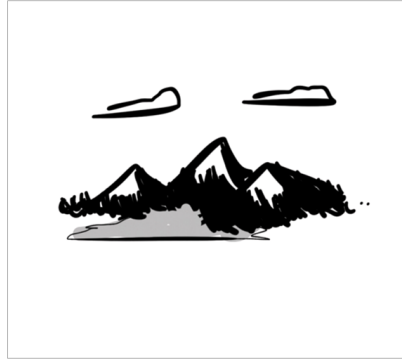




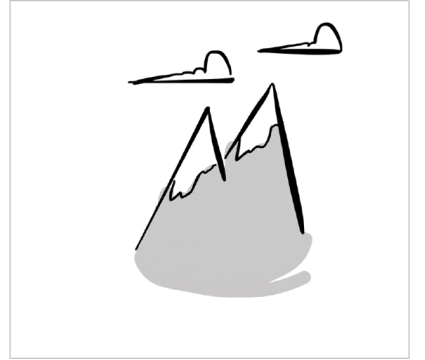
1A



1B



1C



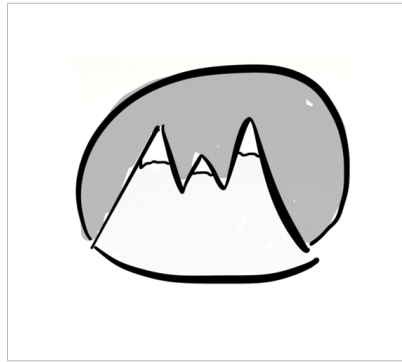
1D



1E



1F



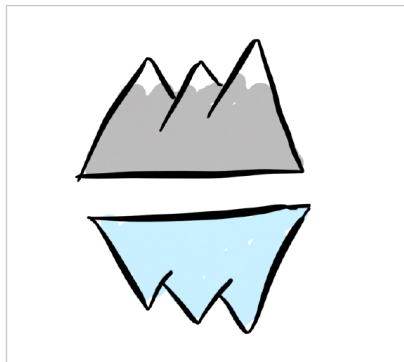
1G



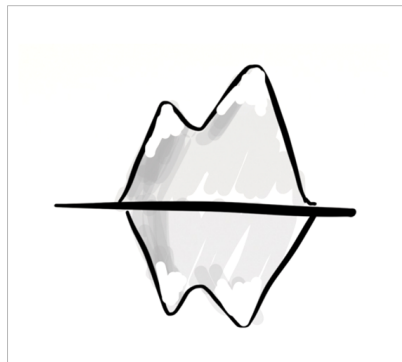
1H



1I



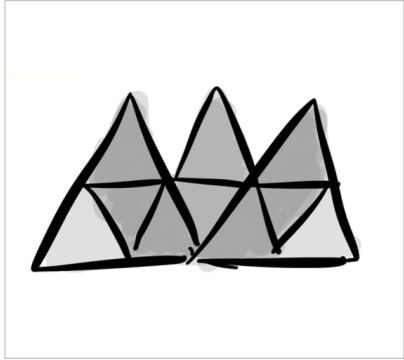
1J



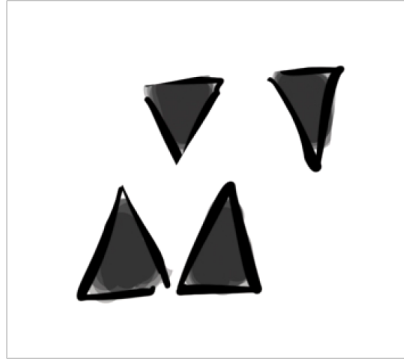
1K



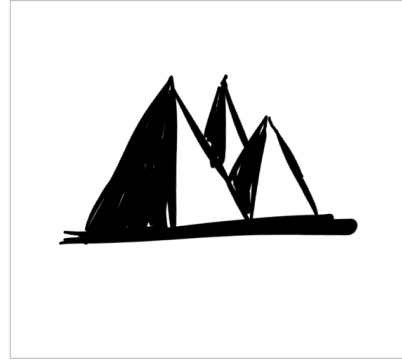
1L



2A



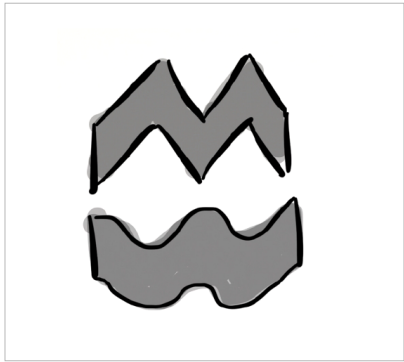
2B



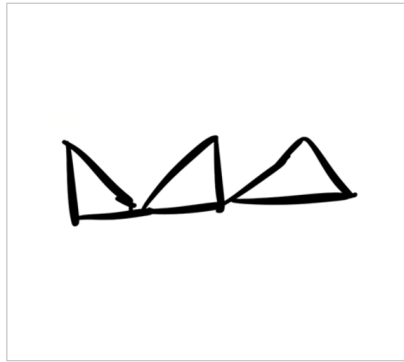
2C



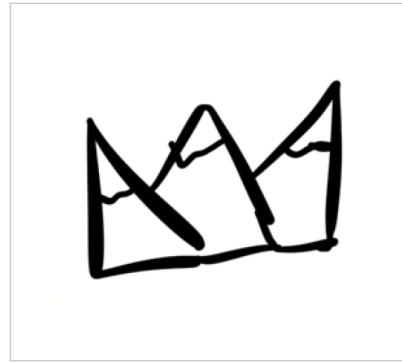
2D



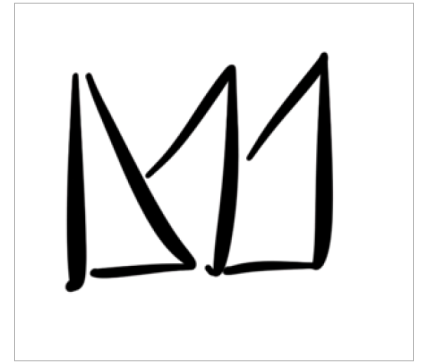
2E



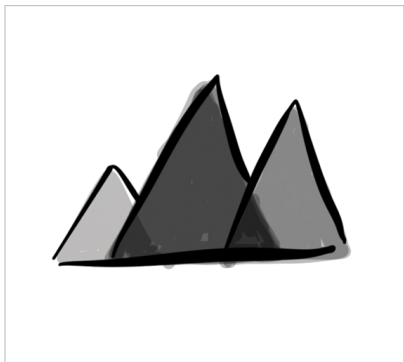
2F



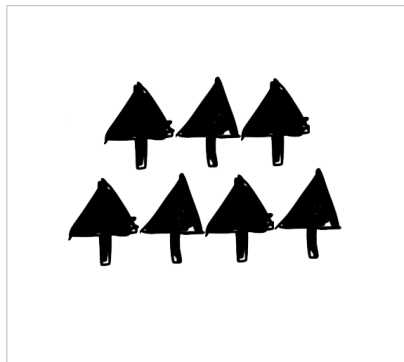
2G



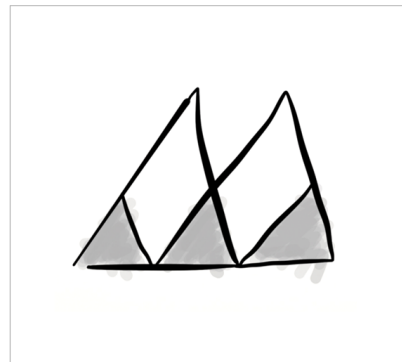
2H



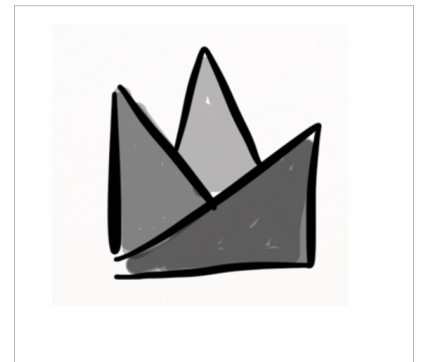
2I



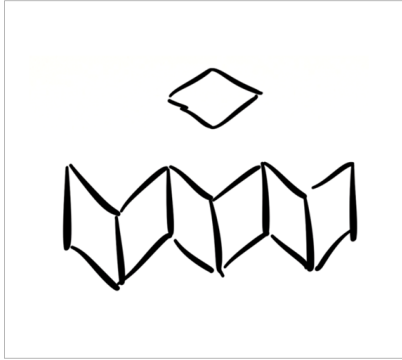
2J



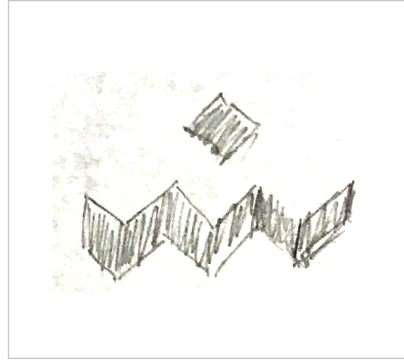
2K



2L



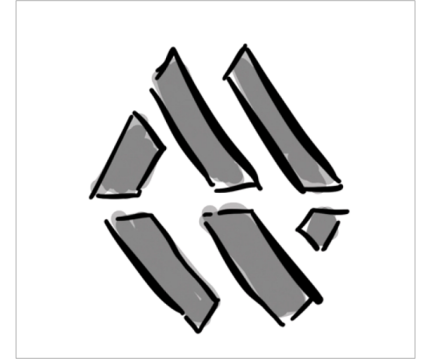
3A



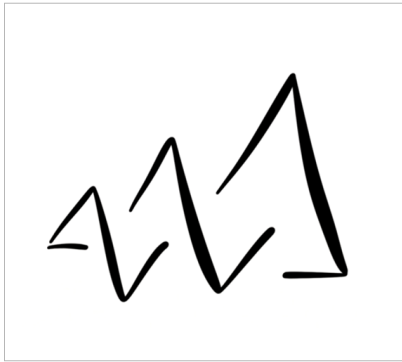
3B



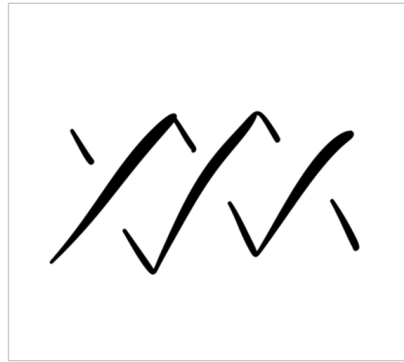
3C



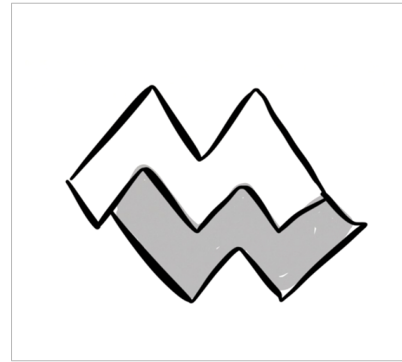
3D



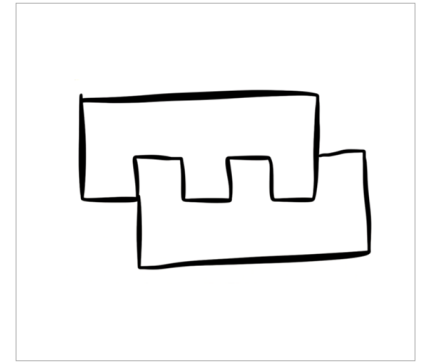
3E



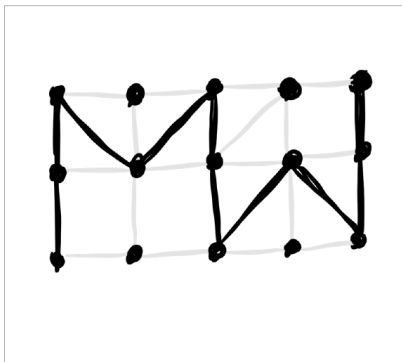
3F



3G



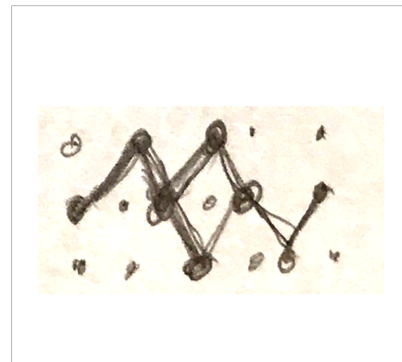
3H



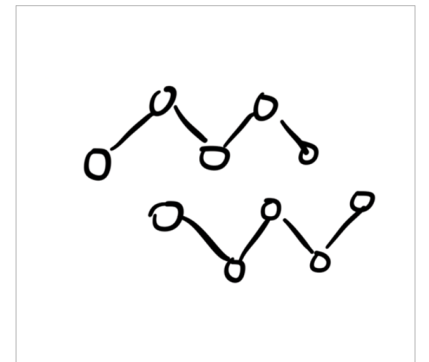
3I



3J



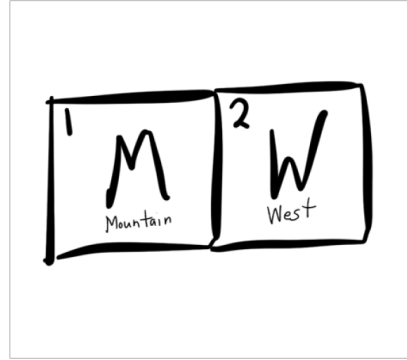
3K



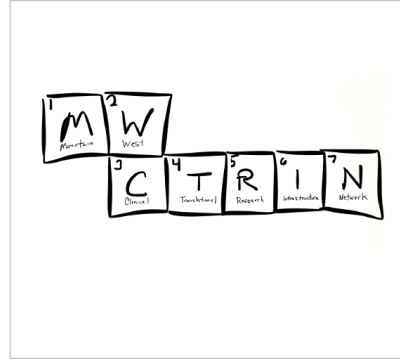
3L



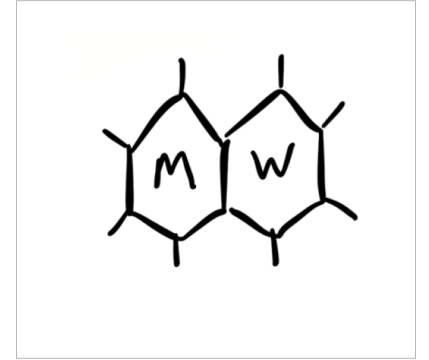
4A



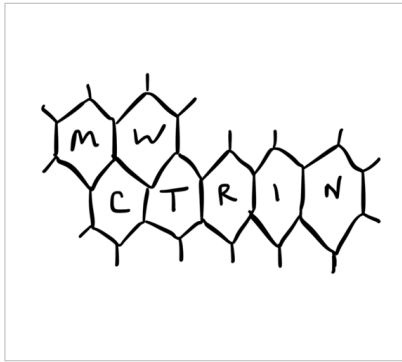
4B



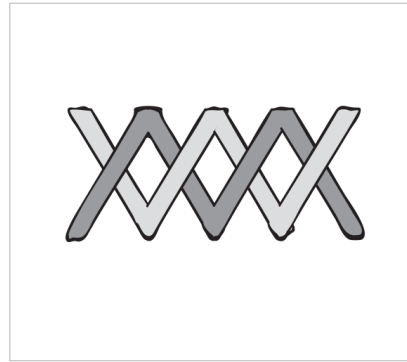
4C



4D



4E



4F



4G



4H



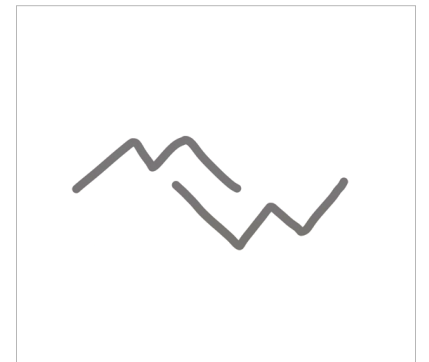
4I



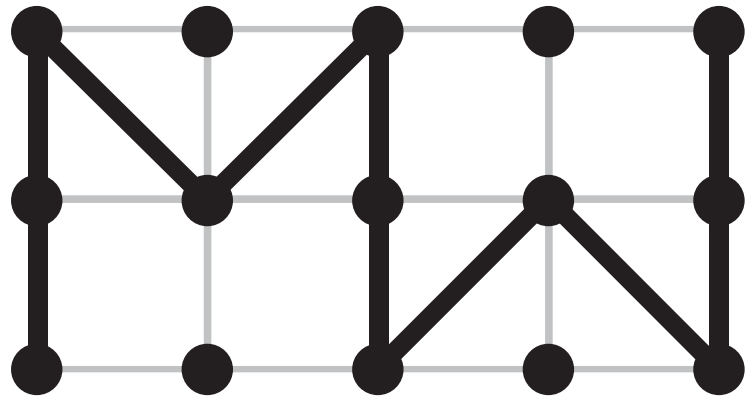
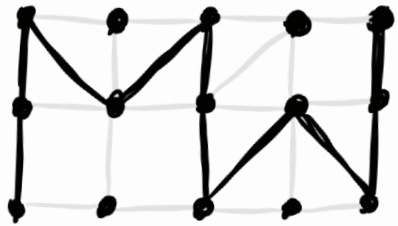
4J

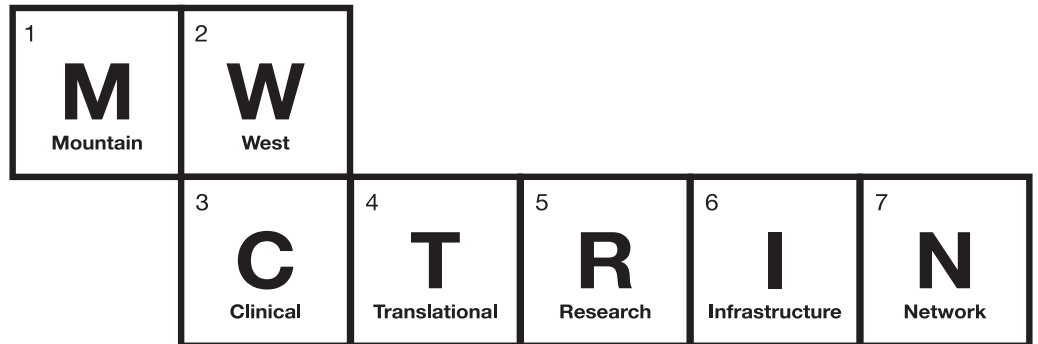
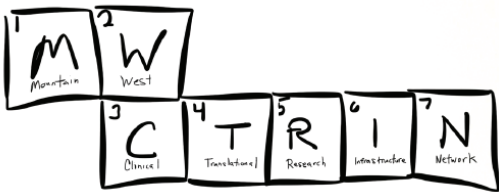


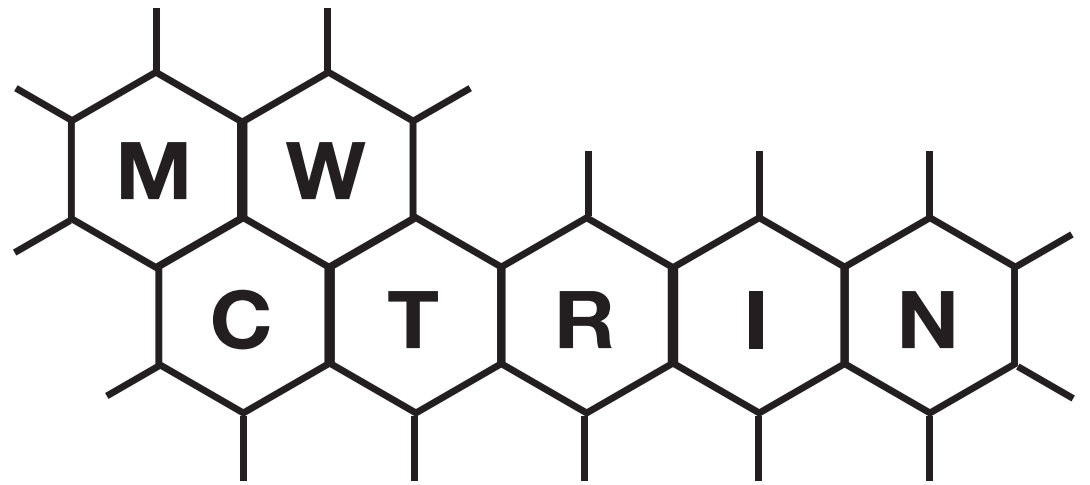
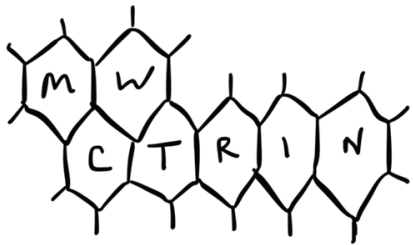
4K



4L

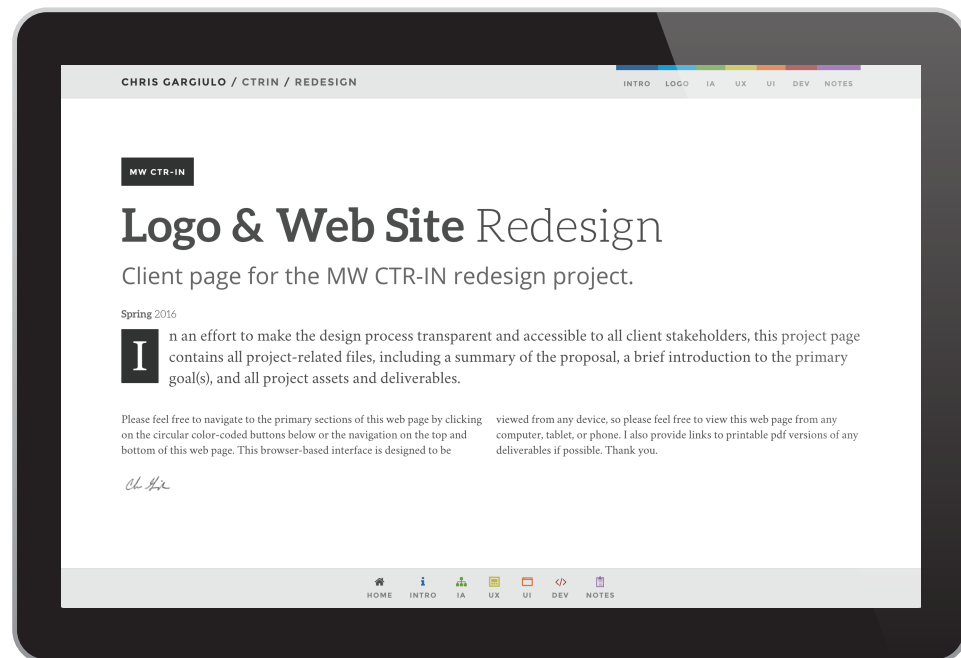








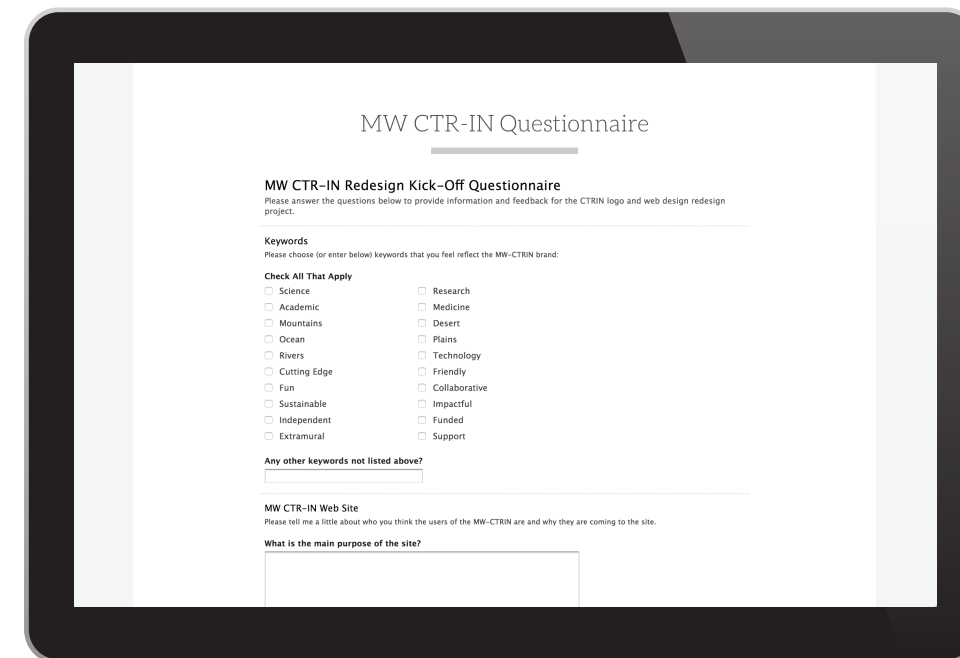
PROJECT PAGE



CHRISGARGIULO.COM/CTRIN/REDESIGN



ONLINE QUESTIONNAIRE



CHRISGARGIULO.COM/CTRIN/REDESIGN/QUESTIONNAIRE



MAHALO